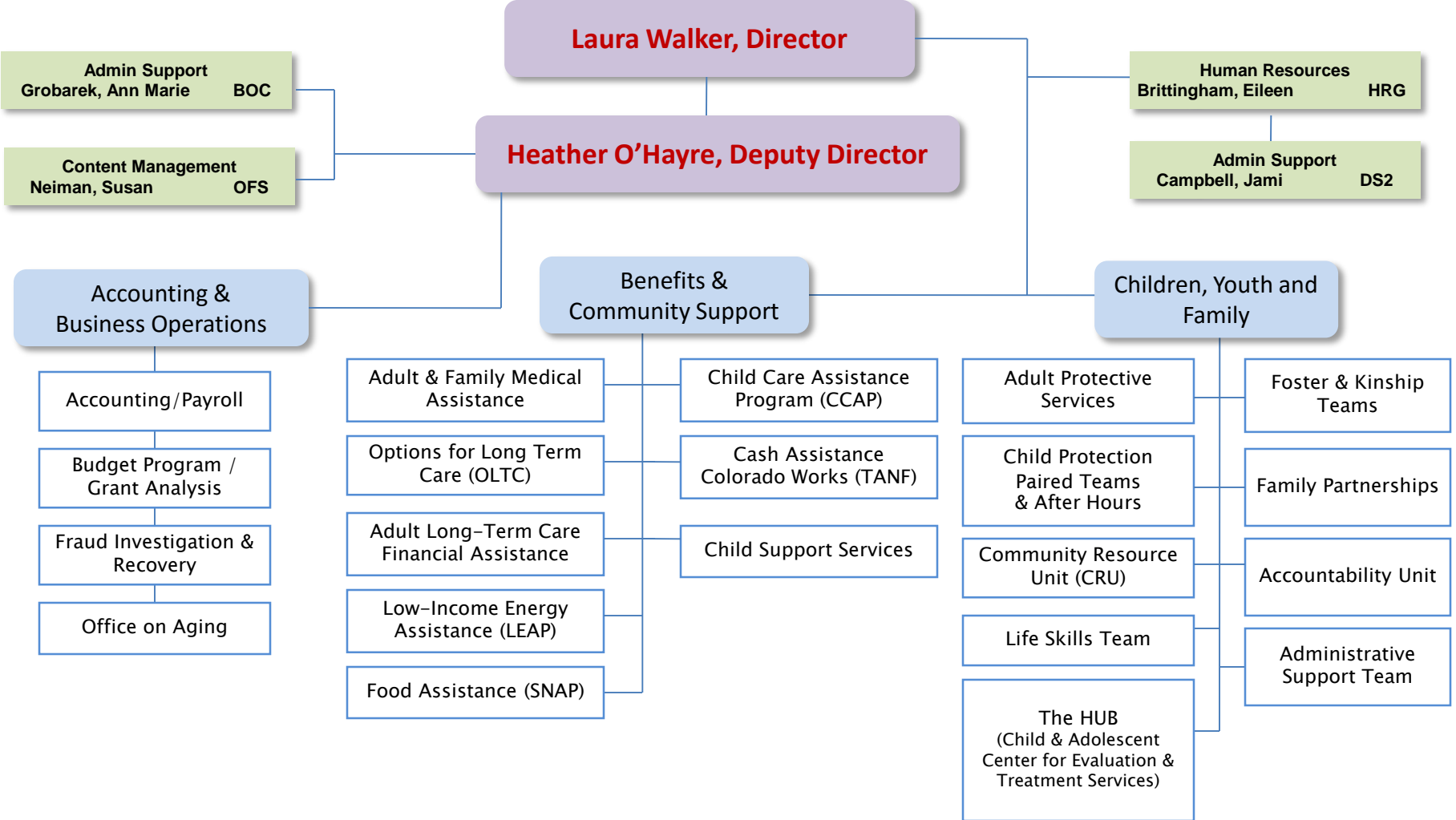


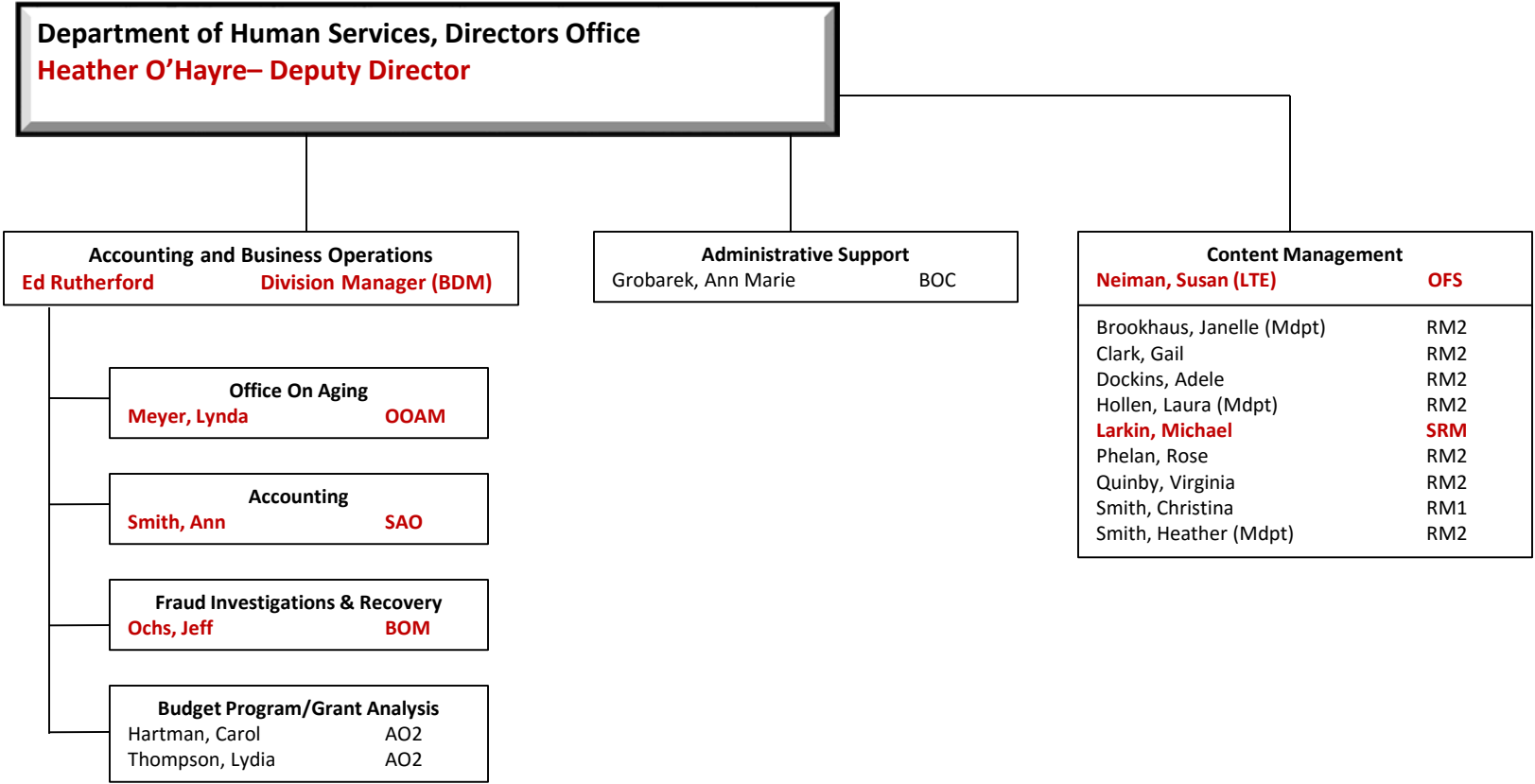
Department of Human Services Organizational Chart

Laura Walker, Director **Heather O'Hayre, Deputy Director**



Director, Managers, Deputies and Team Leaders are indicated in **red** for screen viewing, **bold** for print

Department of Human Services Organizational Chart
Laura Walker, Director **Heather O’Hayre, Deputy Director**



Director, Managers, Deputies and Team Leaders are indicated in **red** for screen viewing, **bold** for print

Department of Human Services Organizational Chart

Laura Walker, Director

Heather O'Hayre, Deputy Director

KEY FOR ALL JOB CLASSIFICATIONS

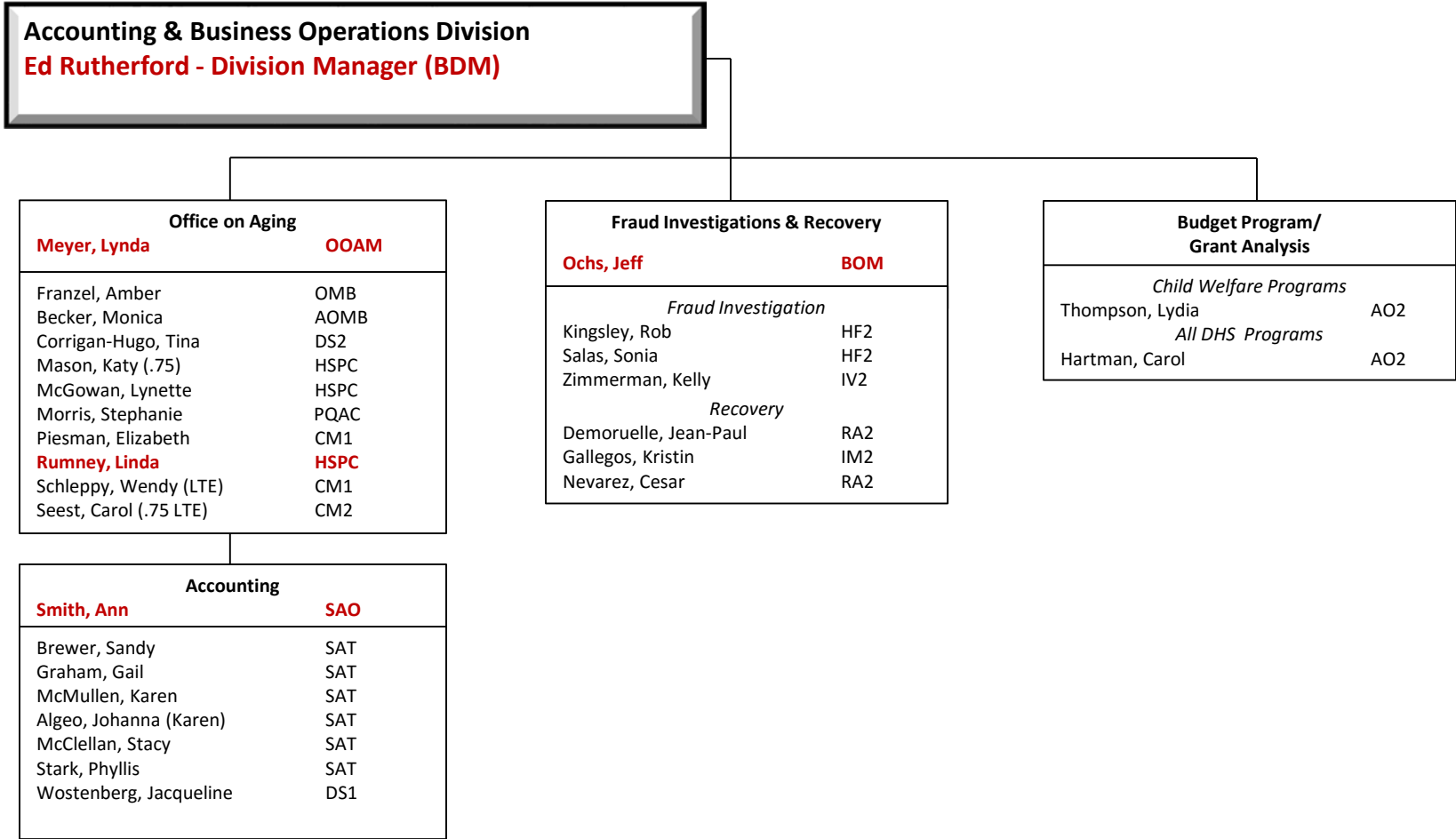
AO 1 or 2	Accountant (I or II)	IMM	Income Maintenance Manager
APT 1 or 2	Assistance Program Technician (I or II)	IS	Intake Specialist
ACSW 1 or 2	Adult Social Caseworker (I or II)	IV 1 or 2	Fraud Investigation Technician (I or II)
AT 1 or 2	Accounting Tech. (I or II)	LSS	Life Skills Specialist
BDM	Business Division Manager	LTCM	Long Term Care Manager
BDDM	Business Deputy Division Manager	OA	Office Assistant
BOC	Business Operations Coordinator	OMB	Ombudsman
BOM	Business Operations Manager	OFS	Office Supervisor
BPDM	Benefits Planning Division Manager	OOAM	Office on Aging Manager
BPDDM	Benefits Planning Deputy Division Manager	PH2NE	Utilization Review Nurse
CM 1 or 2	Case Manager 1 or 2	PQAC	Program Quality Assurance Coordinator
CA	Case Aide	RA 1 or 2	HS Recovery Agent (I or II)
CFSM	Child & Family Services Manager	RM 1 or 2	Records Management Technician (I or II)
CFSDM	Child & Family Services Deputy Manager	SAO	Senior Accountant
CST 1 or 2	Child Support Technician (I or II)	SAA	Senior Administrative Assistant
CSM	Child Support Manager	SAT	Senior Accounting Technician
DS 1 or 2	Department Specialist (I or II)	SCM	Senior Case Manager
EA	Executive Assistant	SSCW	Senior Social Caseworker
HF 1 or 2	HS Fraud Investigator (I or II)	SDS	Senior Department Specialist
HRG	Human Resource Generalist	SIM	Senior Income Maintenance Technician
HSDD	Human Services Deputy Director	SCW 1 or 2	Social Caseworker (I or II)
HSD	Human Services Director	SCWM	Social Caseworker Manager
HSPC	Human Services Program Coordinator	SCT	Senior Child Support Technician
HSTS	Human Services Trauma Specialist	VC	Volunteer Coordinator
HT 1 or 2	Human Services Training Specialist		
IM 1 or 2	Income Maintenance Technician (I or II)		

Director, Managers, Deputies and Team Leaders are indicated in **red** for screen viewing, **bold** for print

Department of Human Services Organizational Chart

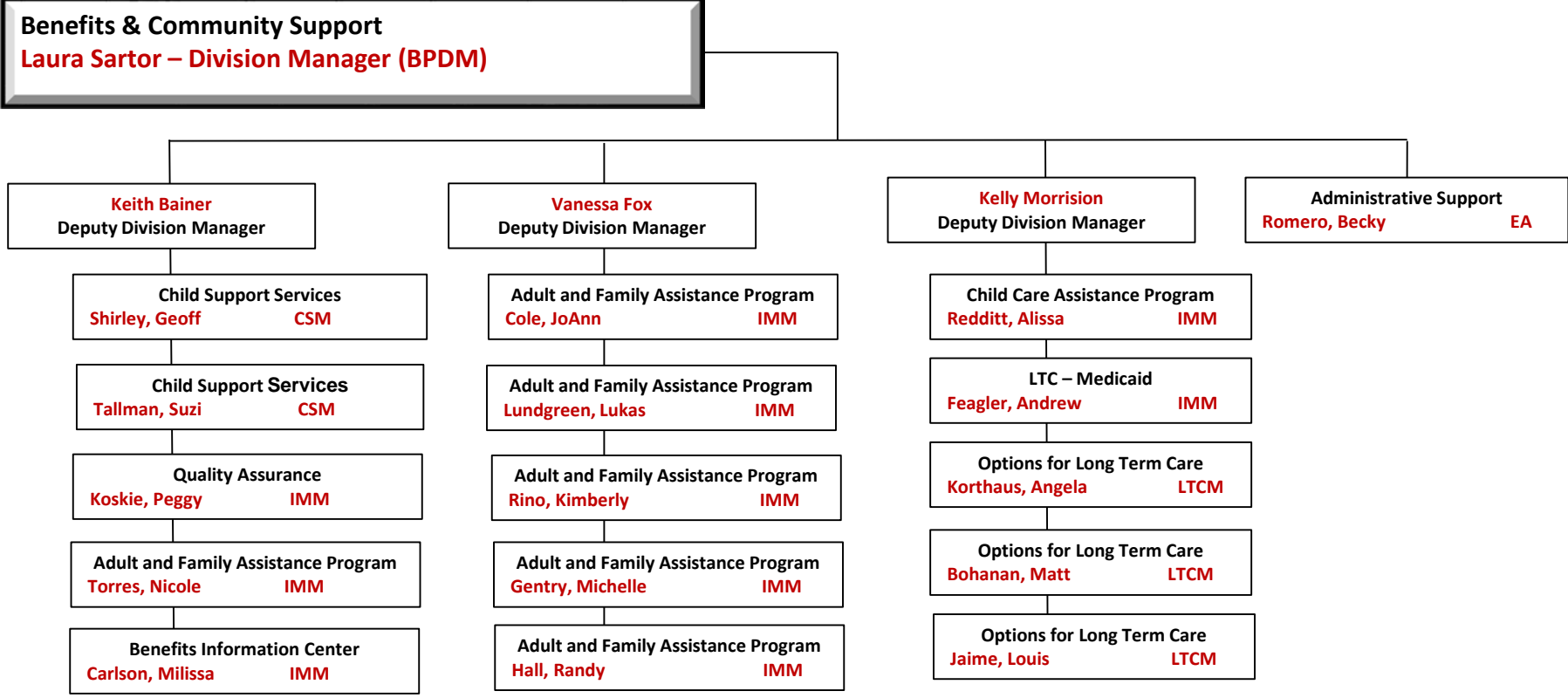
Laura Walker, Director

Heather O'Hayre, Deputy Director



Director, Managers, Deputies and Team Leaders are indicated in **red** for screen viewing, **bold** for print

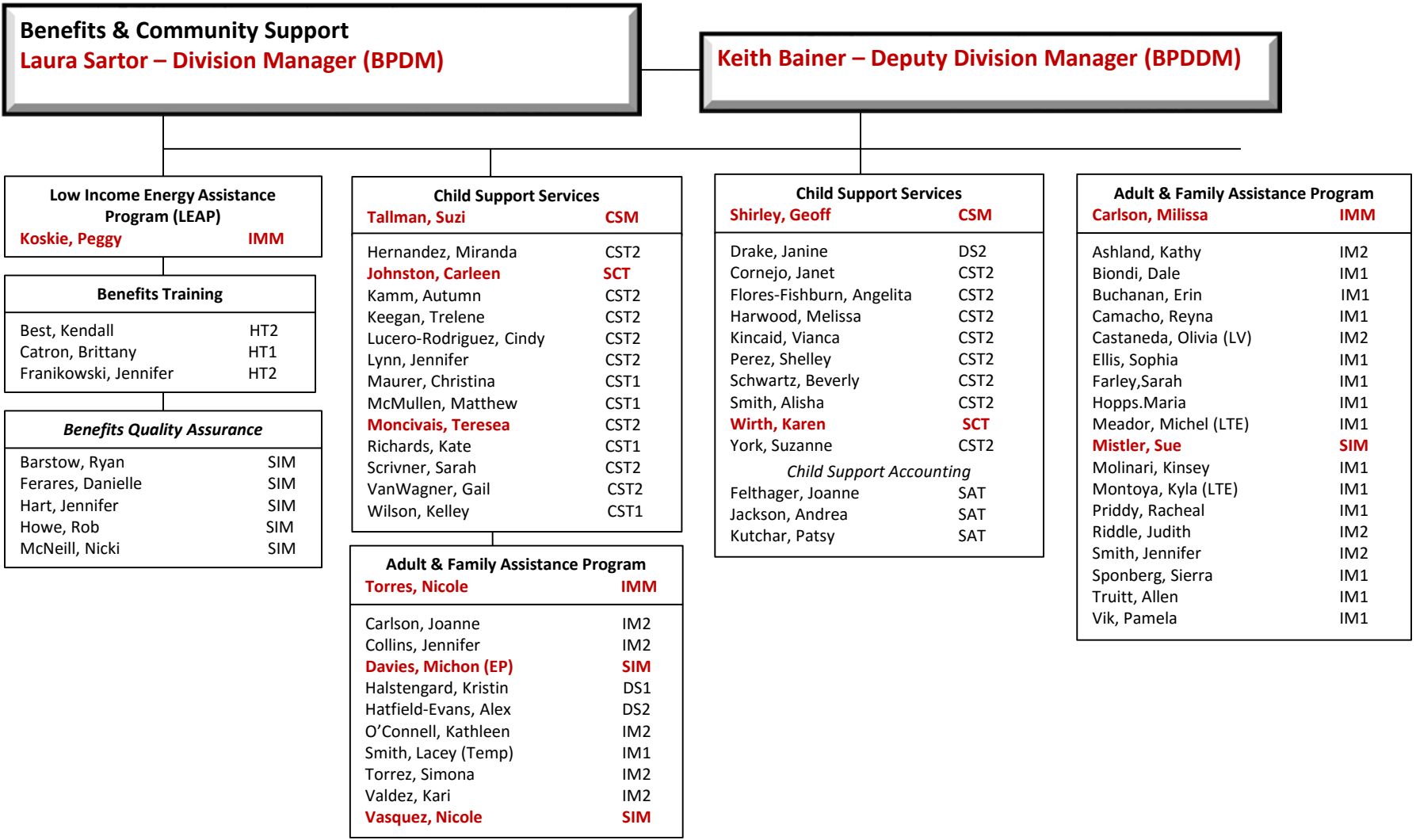
Department of Human Services Organizational Chart
Laura Walker, Director **Heather O’Hayre, Deputy Director**



Director, Managers, Deputies and Team Leaders are indicated in **red** for screen viewing, **bold** for print

Department of Human Services Organizational Chart

Laura Walker, Director **Heather O’Hayre, Deputy Director**



Director, Managers, Deputies and Team Leaders are indicated in **red** for screen viewing, **bold** for print

Department of Human Services Organizational Chart

Laura Walker, Director

Heather O'Hayre, Deputy Director

Benefits & Community Support
Laura Sartor – Division Manager (BPDM)

Kelly Morrison– Deputy Division Manager (BPDDM)

Child Care Assistance Program	
Redditt, Alissa	IMM
DeWitt, Kristen	IM1
Diaz, Isabel	IM2
Graham, Bobbie	IM2
Miller, Renee	IM2
Morales, Violetta	DS2
Nolasco, Estrella	IM1
Riemann, Shawna (temp)	SIM
Vacant	IM1

Options for Long Term Care Medicaid	
Feagler, Andy	IMM
Aragon, Sophia	IM2
Boswell, Michelle	DS2
Brown, Lora	IM2
Deming-Humphrey, Lindsey (temp)	IM2
Jones, Rosa Lee	IM2
Smith, Lugene	IM2
Snow, Aubry (LTE)	DS1
Swecker, Mary	IM2
Zitney, Shannan	IM2

Options for Long Term Care	
Bohanan, Matt	LTCM
Ashby, Kate (LTE)	SCM
Boley, Amanda (LTE)	CM2
Bonner, Abigail (LTE)	CM1
Burch, Kelly (LTE)	CM2
Engelking, Shelbie (LTE)	CM2
Friedel, Alyse (LTE)	CM2
Hunter, Michelle	CM2
Montoya, Britni (LTE)	CM2
Owen, Savannah (LTE)	CM2
<i>Utilization Review Nurse</i>	
Sides, Lindsey (temp)	PN1

Options for Long Term Care	
Korthaus, Angela	LTCM
Jabs, Kris (LTE)	CM1
Lopez, Christina (LTE)	CM2
Mazzella, Kayla (LTE)	OA
Nelson, Lesley (LTE)	CA
O'Grady, Peggy	CM2
Sampson, Brandi (LTE)	CM2
Schmidt, Stephanie (LTE)	CM2
Stucky, Sarah (LTE)	CM2
Winter, Samantha (LTE)	SCM

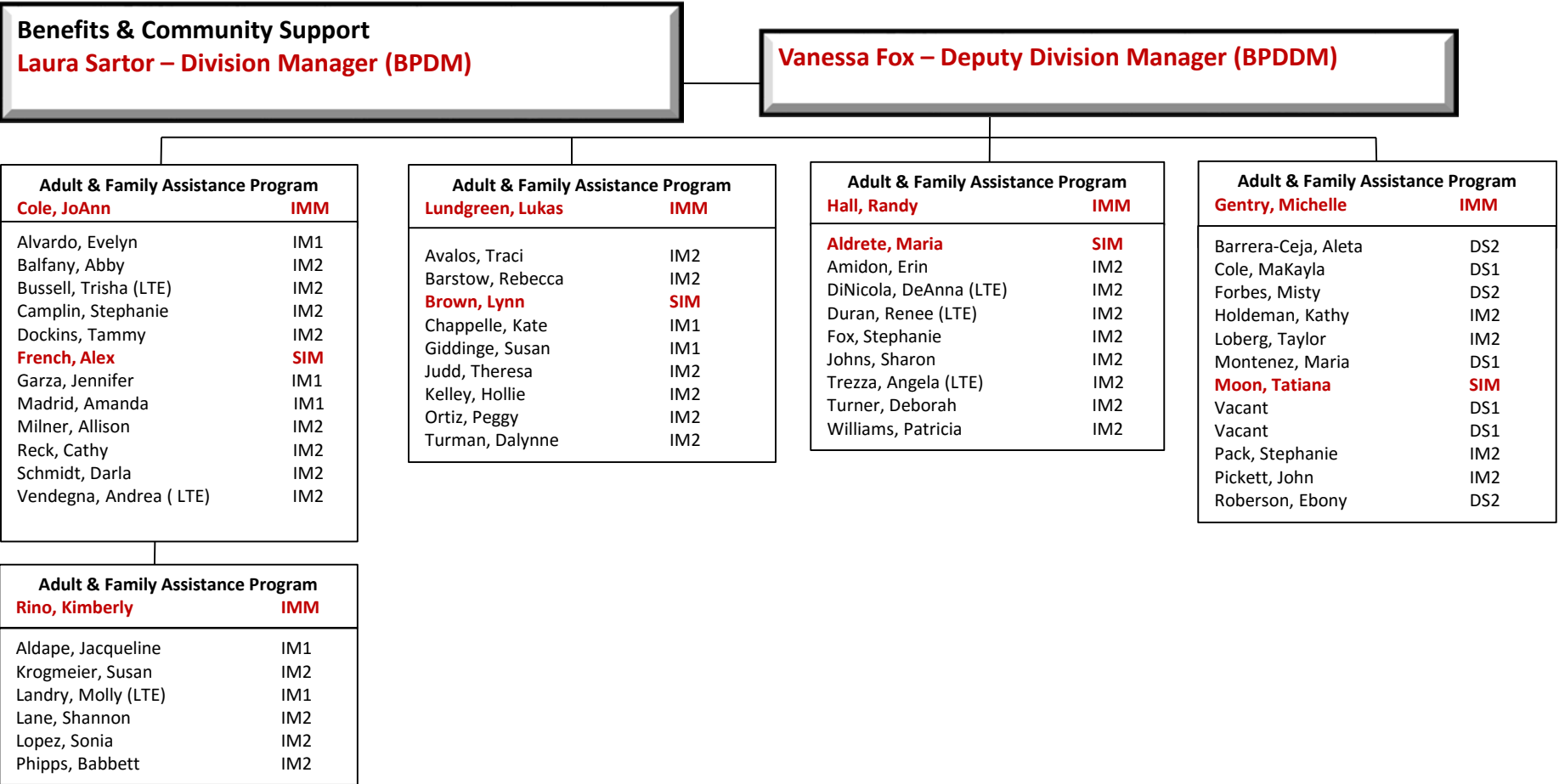
Options for Long Term Care	
Jaime, Loius	LTCM
Fredrick, Debby	CM2
Garcia, Denise (LTE)	CM1
Gibson-Raschen, Jessie (LTE)	CM1
Griffith, Julie (LTE)	CM2
Hunter, Margaret (LTE)	CM1
Jabs, Kris (LTE)	CM1

Director, Managers, Deputies and Team Leaders are indicated in **red** for screen viewing, **bold** for print

Department of Human Services Organizational Chart

Laura Walker, Director

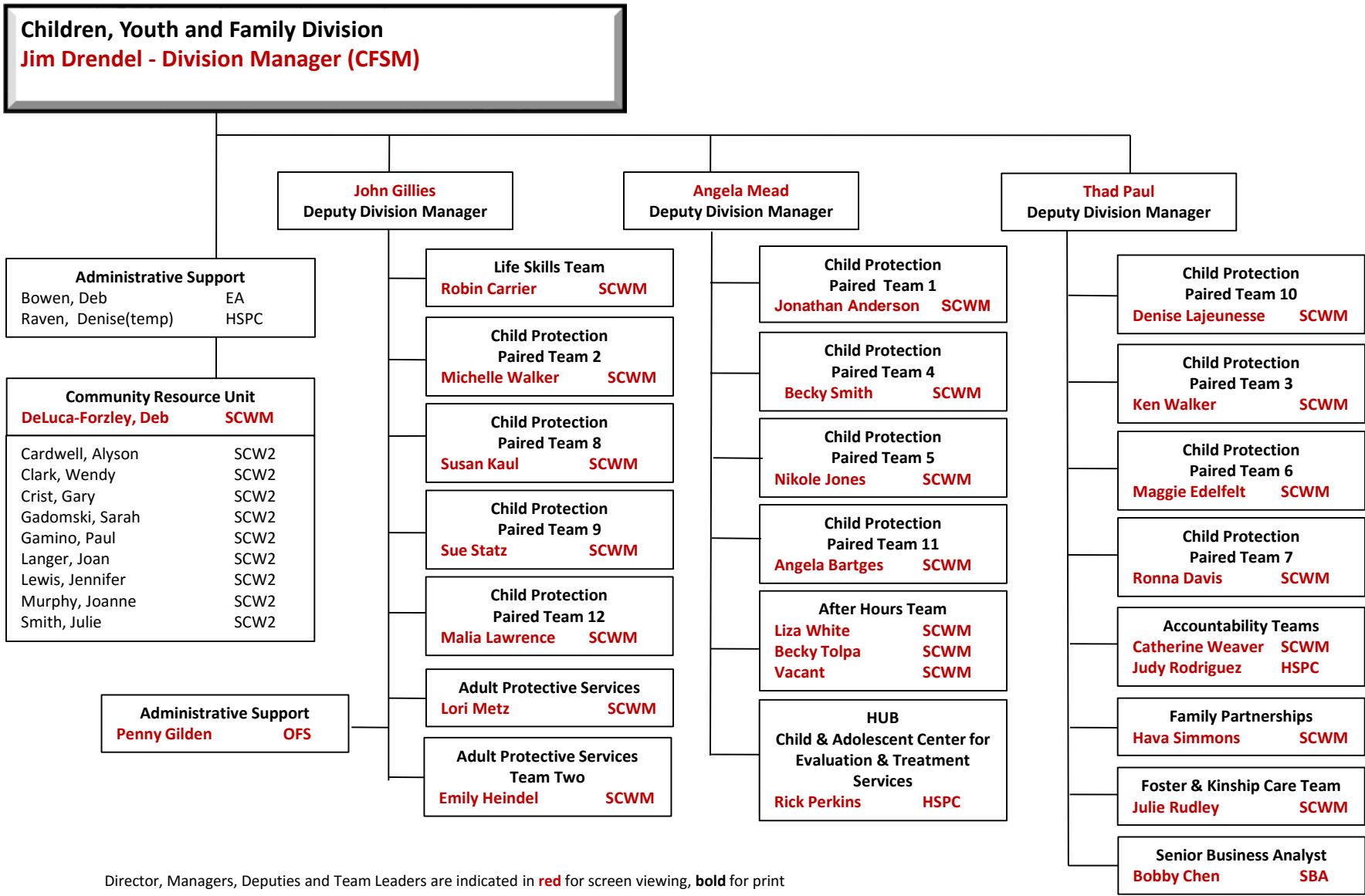
Heather O’Hayre, Deputy Director



Director, Managers, Deputies and Team Leaders are indicated in **red** for screen viewing, **bold** for print

Department of Human Services Organizational Chart

Laura Walker, Director **Heather O'Hayre, Deputy Director**



Director, Managers, Deputies and Team Leaders are indicated in **red** for screen viewing, **bold** for print

Department of Human Services Organizational Chart

Laura Walker, Director

Heather O’Hayre, Deputy Director

Children, Youth and Family Division
Jim Drendel - Division Manager (CFSM)

Thad Paul – Deputy Division Manager (CFSDM)

Child Protection Walker, Ken	Paired Team 3 SCWM
Greeley, Stephanie	SCW2
Hayes, Jessica	SCW2
Jeska, Lesley	SCW2
Johnson, Jessica	SCW1
Pham, Kelly	SCW2
Ribstein, Jared	SCW2

Child Protection Davis, Ronna	Paired Team 7 SCWM
Kugler, Michelle	SCW2
Pantle, Elizabeth	SCW2
Rivera, Yasmin	SCW2
Tanner, Kristin	SCW1
Vail, Nicolete	SCW1
Wolz, Amber	SCW2

Senior Business Analyst Chen, Bobby (LTE)	SBA
--	------------

Foster & Kinship Care Rudley, Julie	SCWM
Freese, Erica	SCW2
Fredrickson, Amberly	SCW2
Kammerzell, Katie	SCW2
Laib, Felicia	SCW2
Matthews, Laura	SCW2
Seim, Stacie	SCW2
Swope, Jay (LTE)	SCW2
Worstell, Alex	SCW2
<i>CPR/First Aid trainer</i>	
Zulian, Nikki (temp)	HE

Accountability Team Weaver, Catherine	SCWM
Ayers, Bonney	DS2
Bennett, Sonya	DS2
Mullett-Hosey, Jean (LTE)	DS2
LaPointe, Hannah (LTE)	QAC
Lehman, Devon	QAC
Phillips, Elizabeth	DS2
Starr, Amanda	QAC
Vacant	HSST
<i>Spanish Translators</i>	
DePuky, Silvia (temp)	CA
Puky, Carla (temp)	CA
Wagner, Wayne (temp)	CA

Child Protection Edelfelt, Maggie	Paired Team 6 SCWM
Vacant	SCW1
Lenz, Trevor	SCW2
Orona, Elizabeth	SCW2
Payne, Rebecca	SCW2
Richards, Toni	SCW1
Wright, Allison	SCW2

Child Protection Lajeunesse, Denise	Paired Team 10 SCWM
Desai, Kush	SCW1
Morales, Tiffany	SCW2
Ortler, Jessica	SCW2
Reynolds, Christina	SCW2
Woolett, Charla	SCW2
Van Kooten, Melissa	SCW2
Heckman, Katie	SSCW

Accountability Team Two Rodriguez, Judy (LTE)	HSPC
Bonda Rust, Pam	DS2
Vacant (LTE .75)	SCW2
Phillips, Tammy	SSCW
FAPT Manager Johnson, Lori	SSCW

Family Partnership Simmons, Hava	SCWM
Eppley, Hannah	SCW2
Gamino, Elizabeth	SCW2
Holman, Jeremy	SCW1
Johnson, Alastair	SCW2
Meriano, Andrea	SCW2
Miller, Sarah	SCW2
Siekmann-Lindenfeld, Rhonda	SCW2
Smith, Arianna	SCW2
Ybarra, Amy	SCW2

Director, Managers, Deputies and Team Leaders are indicated in **red** for screen viewing, **bold** for print

Department of Human Services Organizational Chart

Laura Walker, Director

Heather O'Hayre, Deputy Director

Children, Youth and Family Division
Jim Drendel - Division Manager (CFSM)

Gillies, John – Deputy Division Manager (CFSDM)

Child Protection Paired Team 2	
Walker, Michelle	SCWM
Adolph, Kayla	SCW2
Bondhus, Vanessa	SCW2
Emge, Lydia	SCW1
Jackman, Jay	SCW2
Mekelburg, Riley	SCW1
Ritter, Leandra	SCW1
Sisneros, Grace (LTE)	SCW2
Strong, Jay	SCW2
Suarez, Sherry	SCW2
Yost, Merideth	SCW2

Child Protection Paired Team 8	
Kaul, Susan	SCWM
Delehoy, Miranda	SCW2
Geissier, Tiffany	SCW1
Murray, Alexander	SCW2
Sachleben, Antoinette	SCW2
Sudduth, Jessica	SCW2
Unnerstall, Joe	SCW2

Administrative Support	
Pilon, Marci (.5)	DS2

Child Protection Paired Team 9	
Statz, Sue	SCWM
Fallon, Kelsey	SCW2
Keeley, Angela	SCW2
Rankin, Charise	SCW2
Tines, Roxene	SCW2
Walton, Gabriel	SCW1

Child Protection Paired Team 12	
Lawrence, Malia	SCWM
Brinks, Laura	SCW2
Fish, Janelle (LTE)	SCW1
Jordan, Michelle	SCW2
Sisneros, Grace	SCW2
Tolsma, Pieter	SCW2

Adult Protective Services	
Heindel, Emily	SCWM
Gaona, Nikki	SCW2
Henderson, Adam (LTE)	ASCW1
Kellam, Lydia	ASCW2
Sims, Trisha	ASCW2
Underwood, Katherine	ASCW2

Practice Coach	
Vacant	SSCW

Administrative Support	
Gilden, Penny	OFS
McMillian, Brenda	DS2
Moody, Deb	DS2
Murray, Paula	DS2
Paul, Oriana	DS2
Petersen, Kayla	DS2
Hunter, Jennifer	DS2

Life Skills Team	
Carrier, Robin	SCWM
Branaman, Sydney	CA
Kennedy, Taylor	CA
Lewis, Patricia	CA
Ortega, Elizabeth	CA
Raver, Lauren	CA
Ruebesam, Lore	SCW2
Steele, Lindsey	SCW2
Ulrich-Jones, Christina	VC

Adult Protective Services	
Metz, Lori	SCWM
Barker, Chrstitina	ASCW1
Clough, Matt	ASCW2
Heath, Kathryn	ASCW2
Langford, Emily	ASCW2
Vacant	ASCW2
Nutt, Devynn (LTE)	ASCW1

Director, Managers, Deputies and Team Leaders are indicated in **red** for screen viewing, **bold** for print

Department of Human Services Organizational Chart

Laura Walker, Director **Heather O’Hayre, Deputy Director**

Children, Youth and Family Division
Jim Drendel - Division Manager (CFSM)

Mead, Angela– Deputy Division Manager (CFSDM)

Child Protection Paired Team 1

Anderson, Jonathan **SCWM**

Caroli, Emma	SCW2
Vacant	SCW2
Erickson, Brandon	SCW1
Mitchell, Chelsea	SCW1
Peterson, Taylor (LTE)	SCW1
Stutzman, Savannah	SCW2
Lippert-Wallace, Sara	SCW2

Child Protection Paired Team 5

Jones, Nikole **SCWM**

Beaudry-Staats, Susan	SCW2
Cullen, Kelsea	SCW2
Henderson, Kyra	SCW2
Jacobo, Jillian	SCW1
Vacant	SCW2
Rogers, Gabriella	SCW2

Child Protection After Hours Team 1

Vacant **SCWM**

Child Protection After Hours Team 3

White, Liza **SCWM**

Flachs, Amy (temp)	SCW
Grantham, Kimberli (temp)	SCW
Killerman, Addie (temp)	SCW
Romano, Lauren (temp)	IS
HUB	
Hansell, Hannah (temp)	IS
Wichman, Jessica	IS

Child Protection Paired Team 4

Smith, Becky **SCWM**

Avila, CaSandra	SCW2
Edwards, Kelsey (temp)	CA
Estrada, Rebecca	SCW1
(Spanish Translator)	
Gregerson, Meghan (temp)	CA
Johnson, Lori	SCW2
Orozco, Amanda	SCW2
Shawley, Cecily	SCW1
Troudt, Nicole	SCW2
Zadra, Meghan (temp)	CA

Child Protection Paired Team 11

Bartges, Angela **SCWM**

Davis, Nicole	SCW1
Fotsch, Andrea	SCW2
Lorenzen, Michelle	SCW2
Mai, Heather	SCW1
Scheid, Jessica	SCW2
Weisser, Kimberly	SCW2

HUB

Child & Adolescent Center for Evaluation & Treatment Services

Perkins, Rick **PC**

Andreen, Jesy	IS
Brawley, Mykel	IS
Dahl, Hannah	IS
Gregerson, Meghan	IS
Harper, Cynthia	IS
Julian, Sarah	SCW
Law, Melanie	IS
Kapps, Katie	IS
Nededog, Patricia (temp)	IS
Pagnotta, Jenna	IS
Pando, Deb	IS
Sanfilippo, Lesley	IS
Sapper, Samantha	IS
Tamai, Camille	IS
Volzke, Amber	IS
Walls, Courtney	IS

Practice Coach

Leili-Biss, Neshamah **SSCW**

Child Protection After Hours Team 2

Tolpa, Becky **SCWM**

Harnig, Brandie (temp)	SCW
McFarlane, Andrea(temp)	SCW
Outland, Pearl (temp)	SCW
Zakaria, Corine (temp)	SCW
HUB	
Cowan, Keslie	IS
Yearous, Karen	SCW2

Director, Managers, Deputies and Team Leaders are indicated in **red** for screen viewing, **bold** for print