

# Predicted High Park Fire Flood Response: Buckhorn Creek (Downstream)



USDA Natural Resources Conservation Service

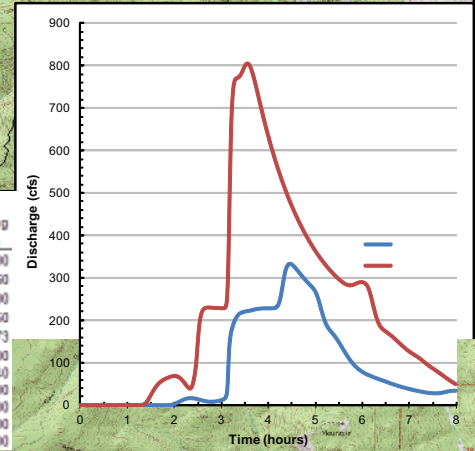
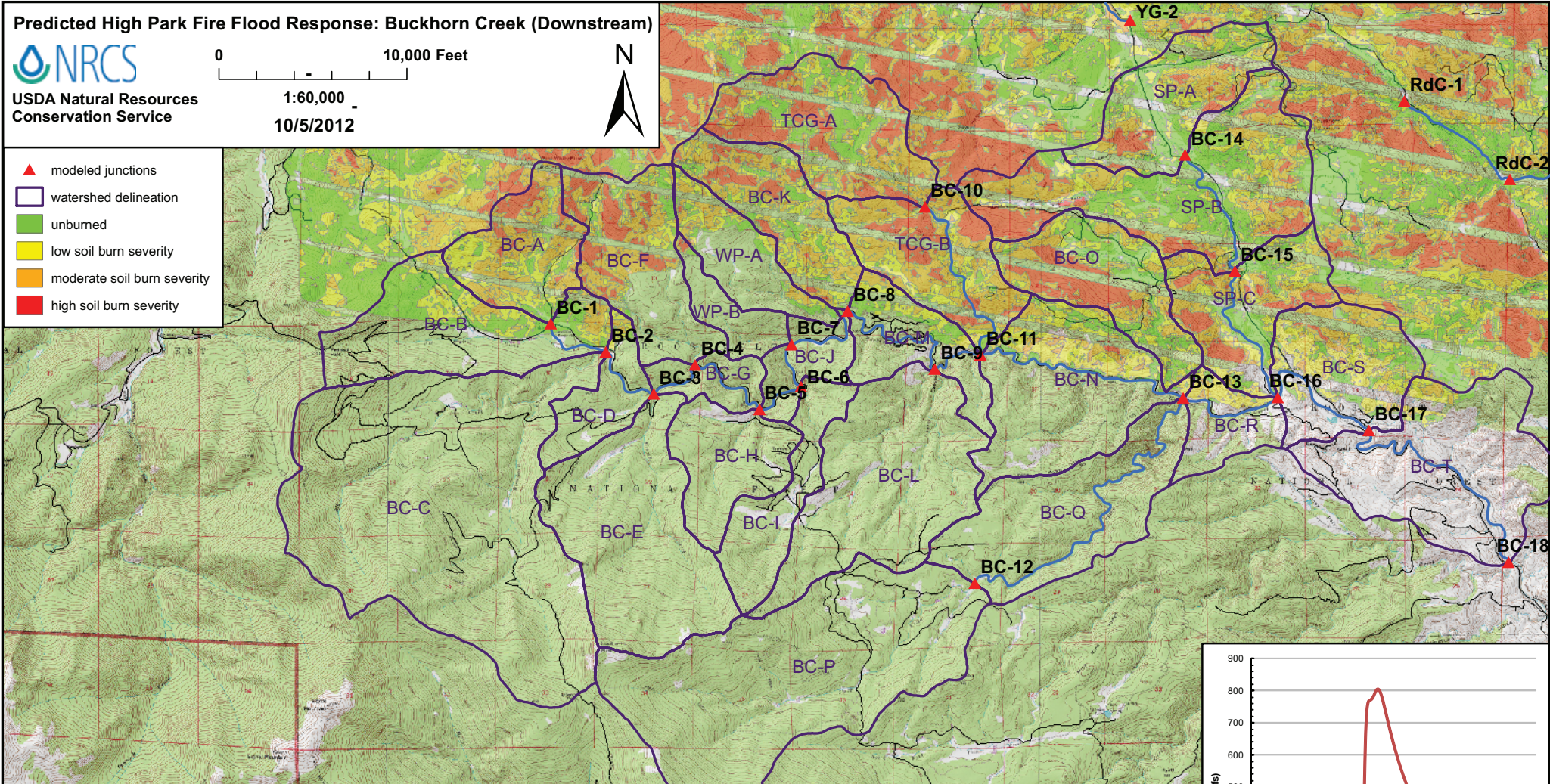
0 10,000 Feet

1:60,000

10/5/2012



- ▲ modeled junctions
- watershed delineation
- unburned
- low soil burn severity
- moderate soil burn severity
- high soil burn severity



Junction or Catchment	Drainage Area (mi <sup>2</sup> )	2-Year Rain Event (0.8 inches)				10-Year Rain Event (1.5 inches)				25-Year Rain Event (1.8 inches)				50-Year Rain Event (2.2 inches)				100-Year Rain Event (2.4 inches)			
		Pred. Flow (cfs)	Post/Pre	Sed. Bulking	Flow (cfs)	Pred. Flow (cfs)	Post/Pre	Sed. Bulking	Flow (cfs)	Pred. Flow (cfs)	Post/Pre	Sed. Bulking	Flow (cfs)	Pred. Flow (cfs)	Post/Pre	Sed. Bulking	Flow (cfs)	Pred. Flow (cfs)	Post/Pre	Sed. Bulking	Flow (cfs)
BC-9	26.21	0	8.7	n/a	10	66	210	3.1	230	170	390	2.4	430	440	810	1.8	890	670	1200	1.7	1300
BC-10	2.08	0	0	n/a	0	0	79	n/a	99	2.8	160	56.1	200	31	290	9.4	360	54	370	6.8	460
BC-11	31.11	0.6	64	106.66667	70	110	360	3.2	400	250	690	2.7	760	650	1400	2.5	1600	830	1800	2.1	1900
Buckhorn Creek O	1.65	3.2	46	14.375	58	120	280	2.4	350	200	420	2.1	530	330	640	1.9	800	410	760	1.9	950
BC-12	5.16	0	0	n/a	0	0	0	n/a	0	2.0	2.0	1.0	2	39	39	1.0	39	73	73	1.0	73
BC-13	42.90	3.2	68	21.25	75	240	620	2.6	690	470	1100	2.4	1200	930	1900	2.0	2100	1300	2400	1.8	2700
BC-14	1.64	0	6.6	n/a	7	62	140	2.3	150	120	240	1.9	260	230	400	1.7	440	290	490	1.7	540
BC-15	4.97	0	20	n/a	22	140	390	2.9	430	310	680	2.2	750	610	1100	1.9	1300	790	1400	1.8	1500
BC-16	50.23	3.1	84	27	92	360	870	2.3	950	780	1700	2.2	1900	1500	3100	2.1	3400	2000	3900	1.9	4300
BC-17	51.95	2.2	78	35	86	340	820	2.4	900	760	1600	2.1	1800	1500	3000	2.0	3300	2000	3800	1.9	4200
BC-18	54.96	0	75	n/a	83	330	810	2.4	890	730	1600	2.2	1700	1500	3000	2.0	3300	2000	3700	1.9	4100