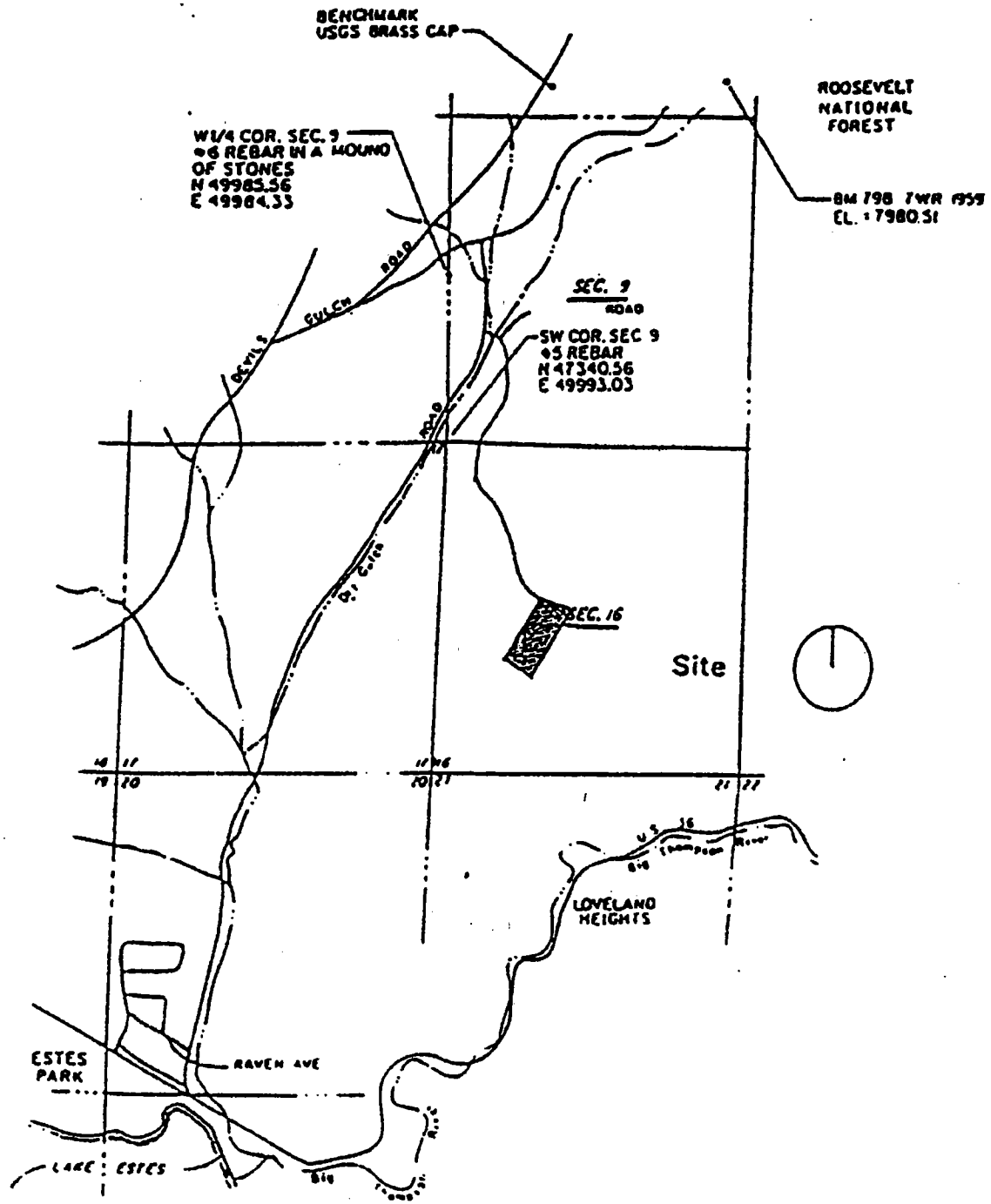


# Larimer County Wildfire Hazard Area and Roofing Classification Map

ENGINEERED FOOTING  
AND FOUNDATIONS MAP

A

# SAMPLE ONLY



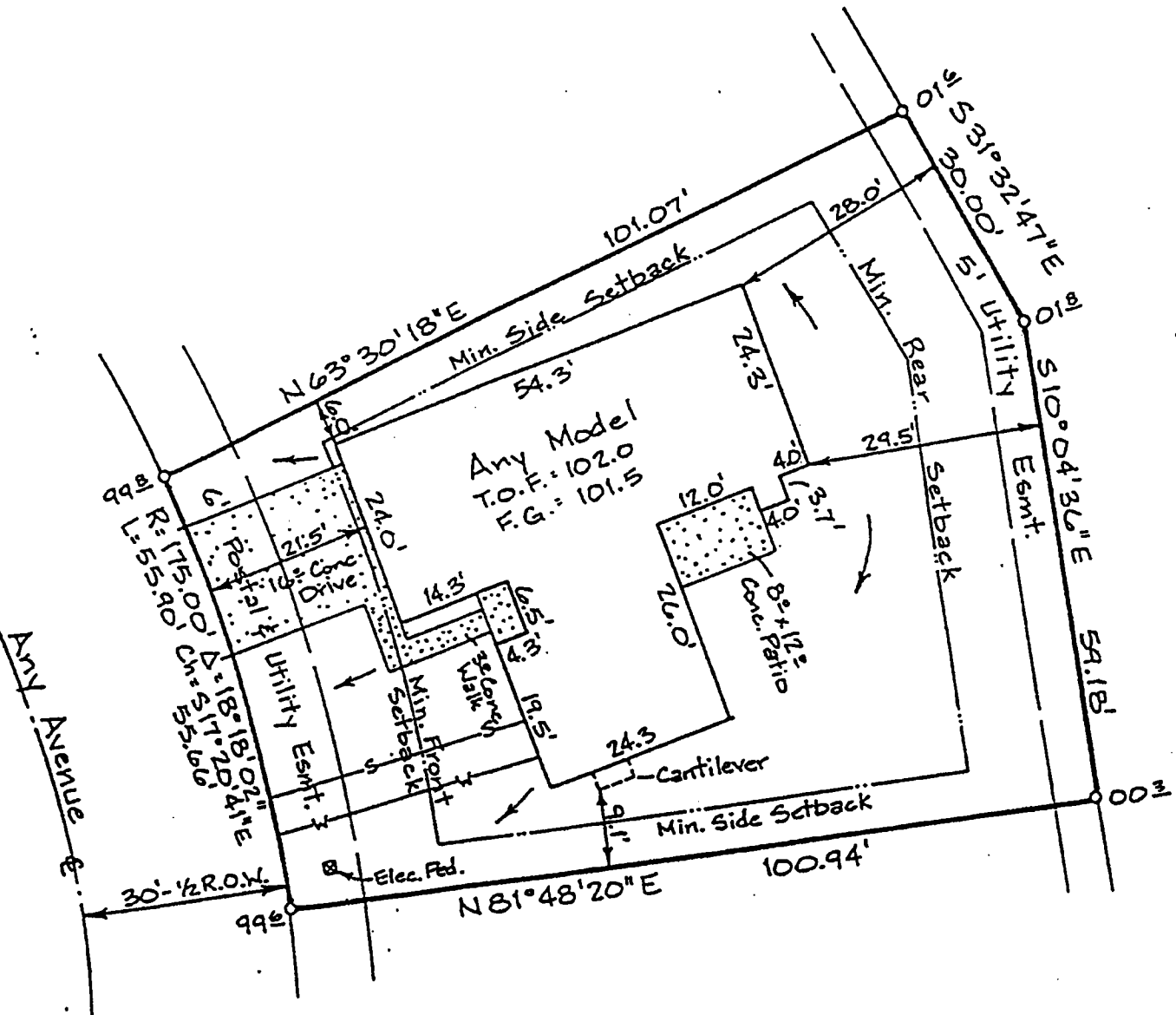
VICINITY MAP



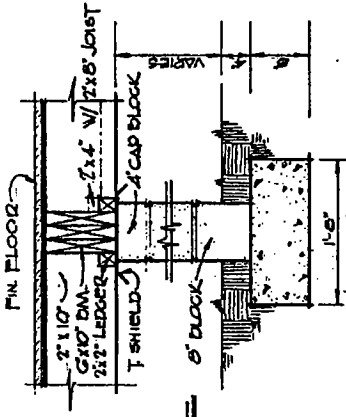
# PLOT PLAN

Lot 1, Block 2, Any Subdivision (a P.U.D.)  
Larimer County, Colorado

1425 Any Avenue

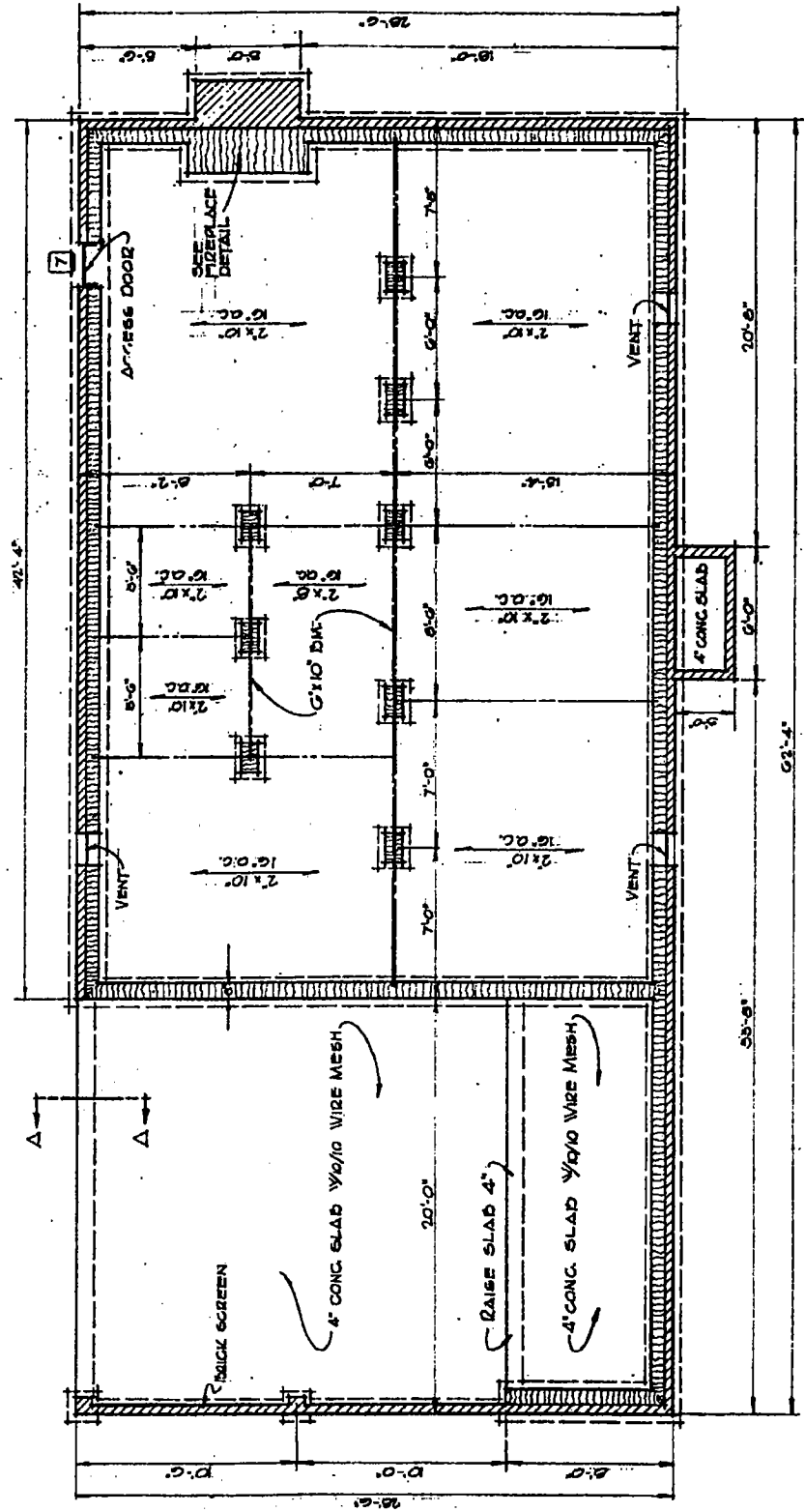


SAMPLE ONLY



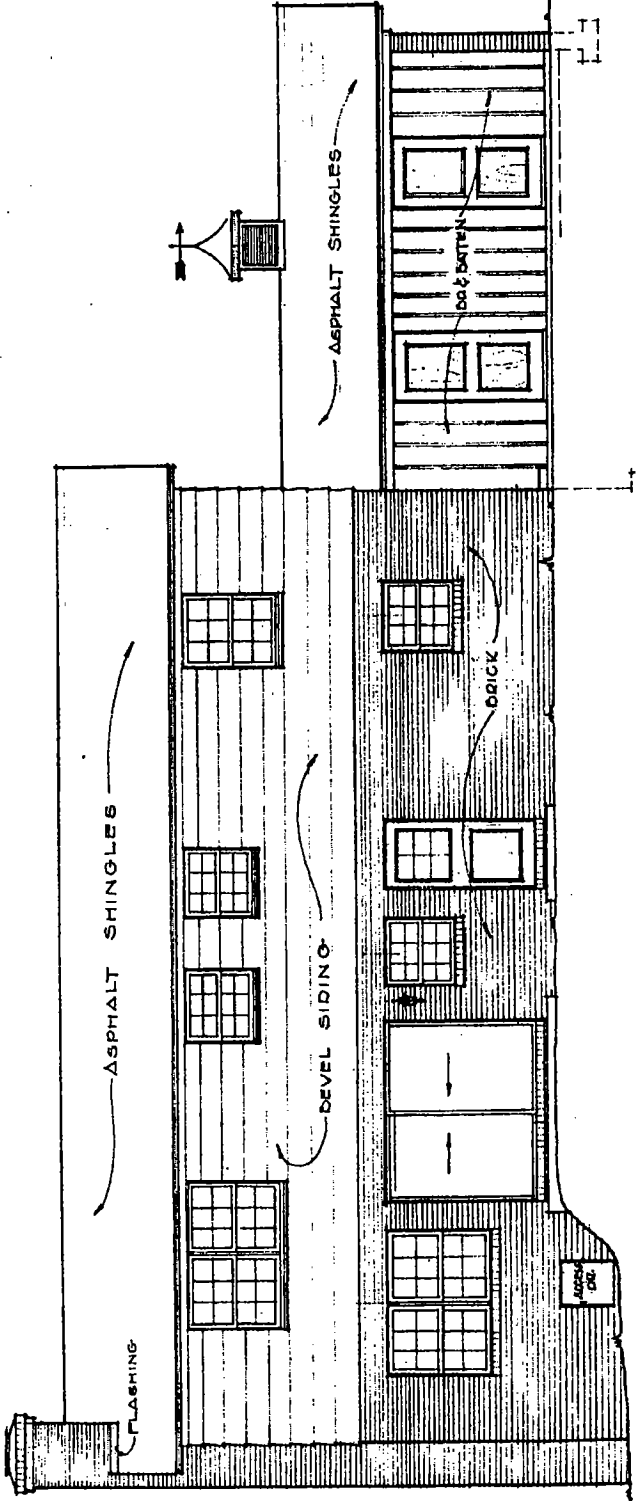
PIER DETAIL  
SCALE: 1/4"=1'-0"

**SAMPLE ONLY  
ENGINEERED FOUNDATION REQUIRED**



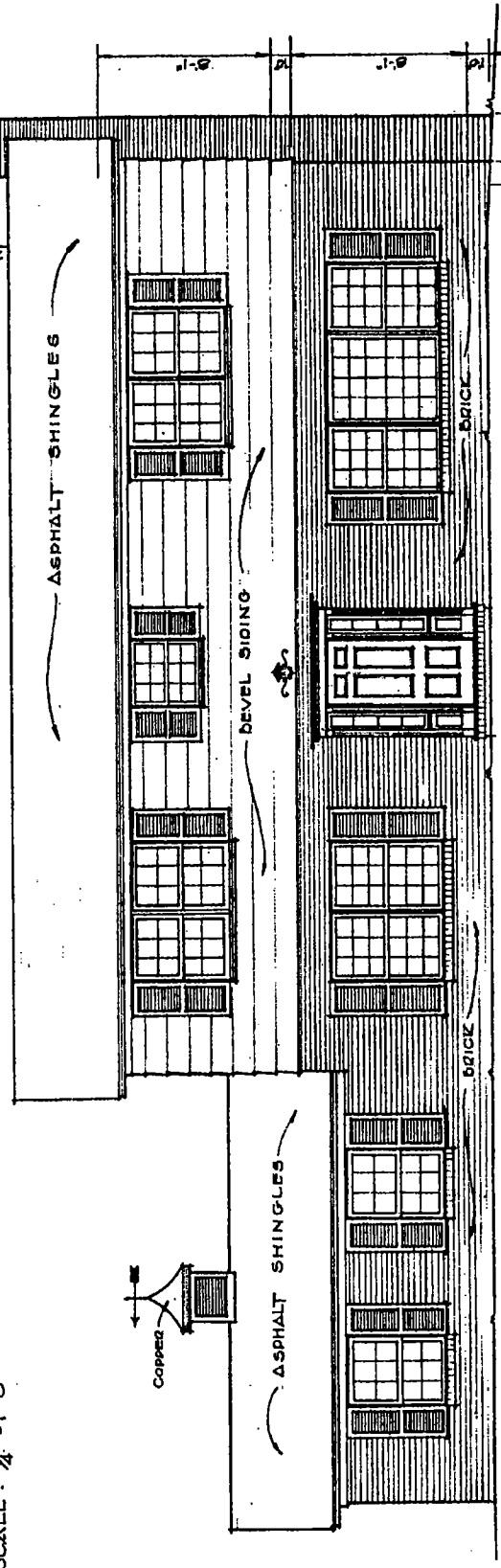
FOUNDATION PLAN  
SCALE: 1/4"=1'-0"

SAMPLE ONLY



REAR ELEVATION

SCALE: 1/4" = 1'-0"

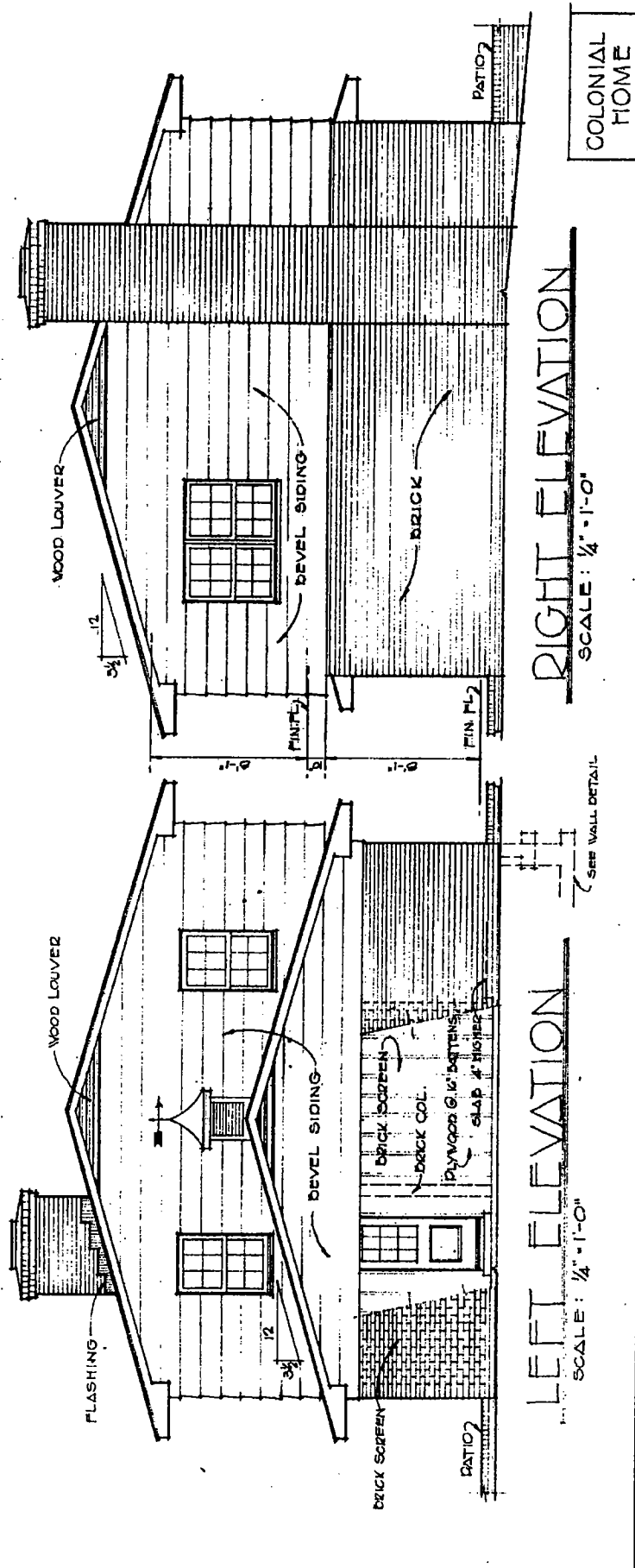


FRONT ELEVATION

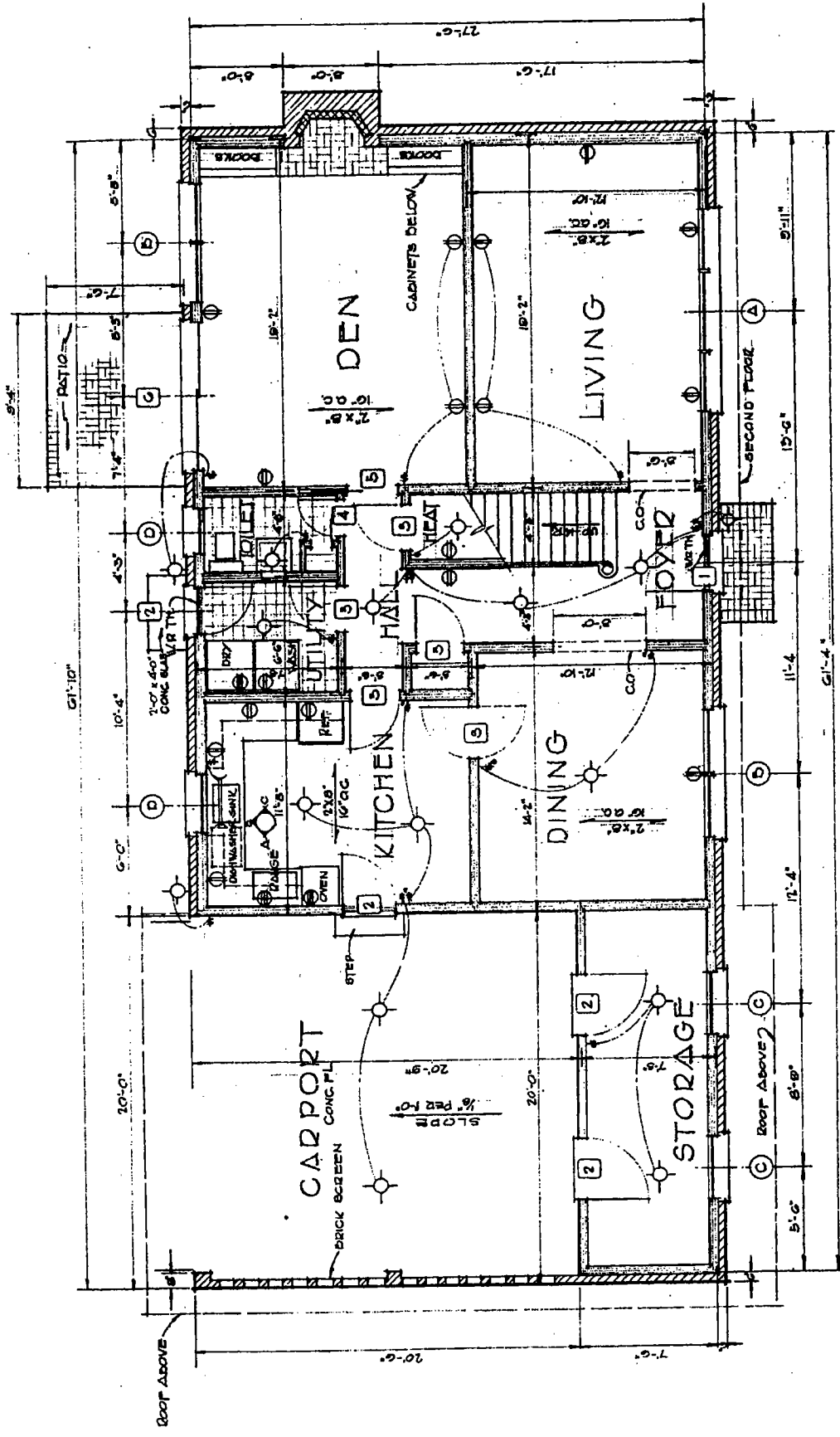
SCALE: 1/4" = 1'-0"

SEE WALL DETAIL

H



**SAMPLE ONLY**



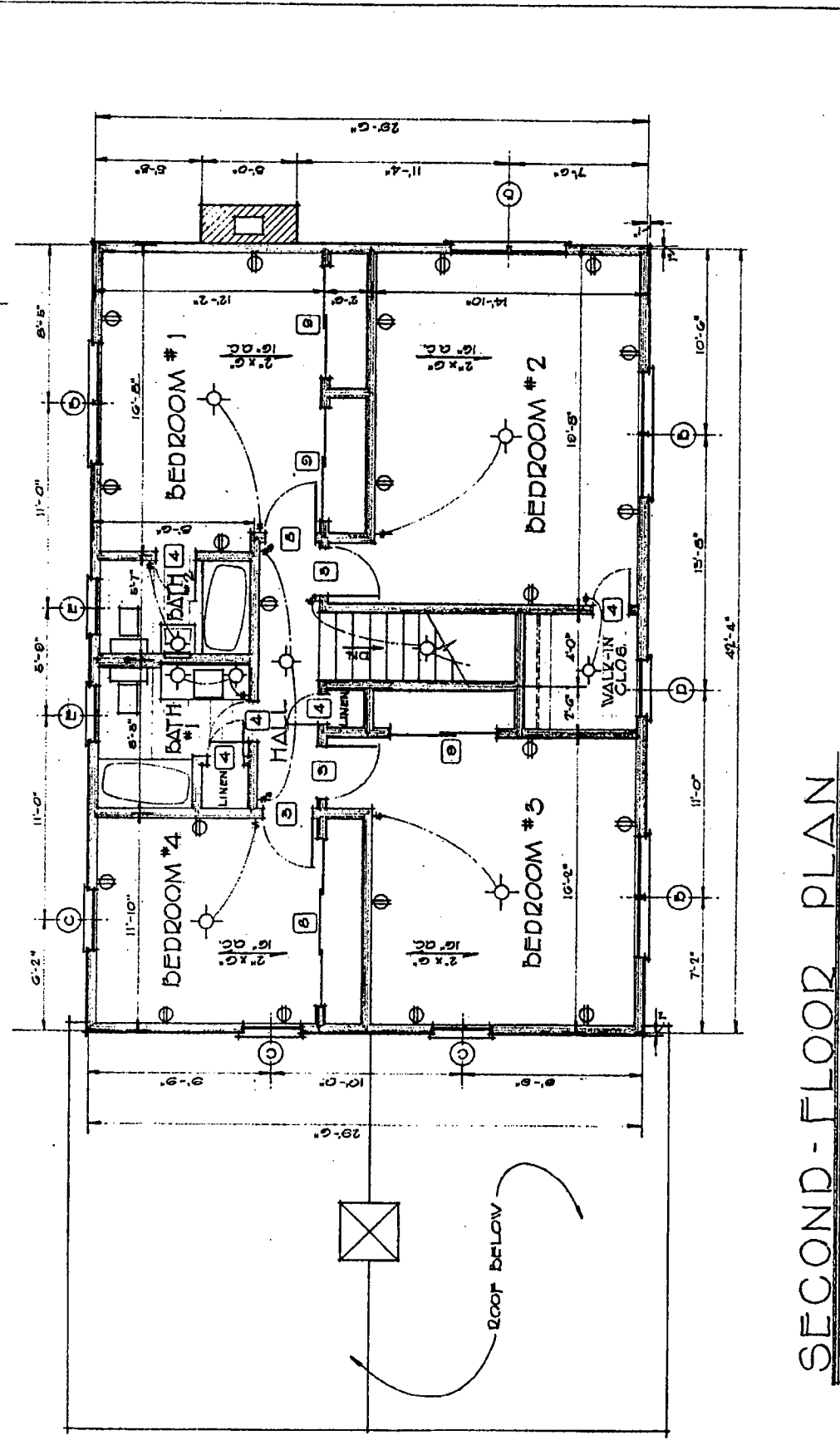
COLONIAL HOME 2

FIRST-FLOOR PLAN

SCALE: 1/4" = 1'-0"

SAMPLE ONLY





COLONIAL HOME 3

**SECOND-FLOOR PLAN**  
 SCALE: 1/4" = 1'-0"

SAMPLE ONLY

K

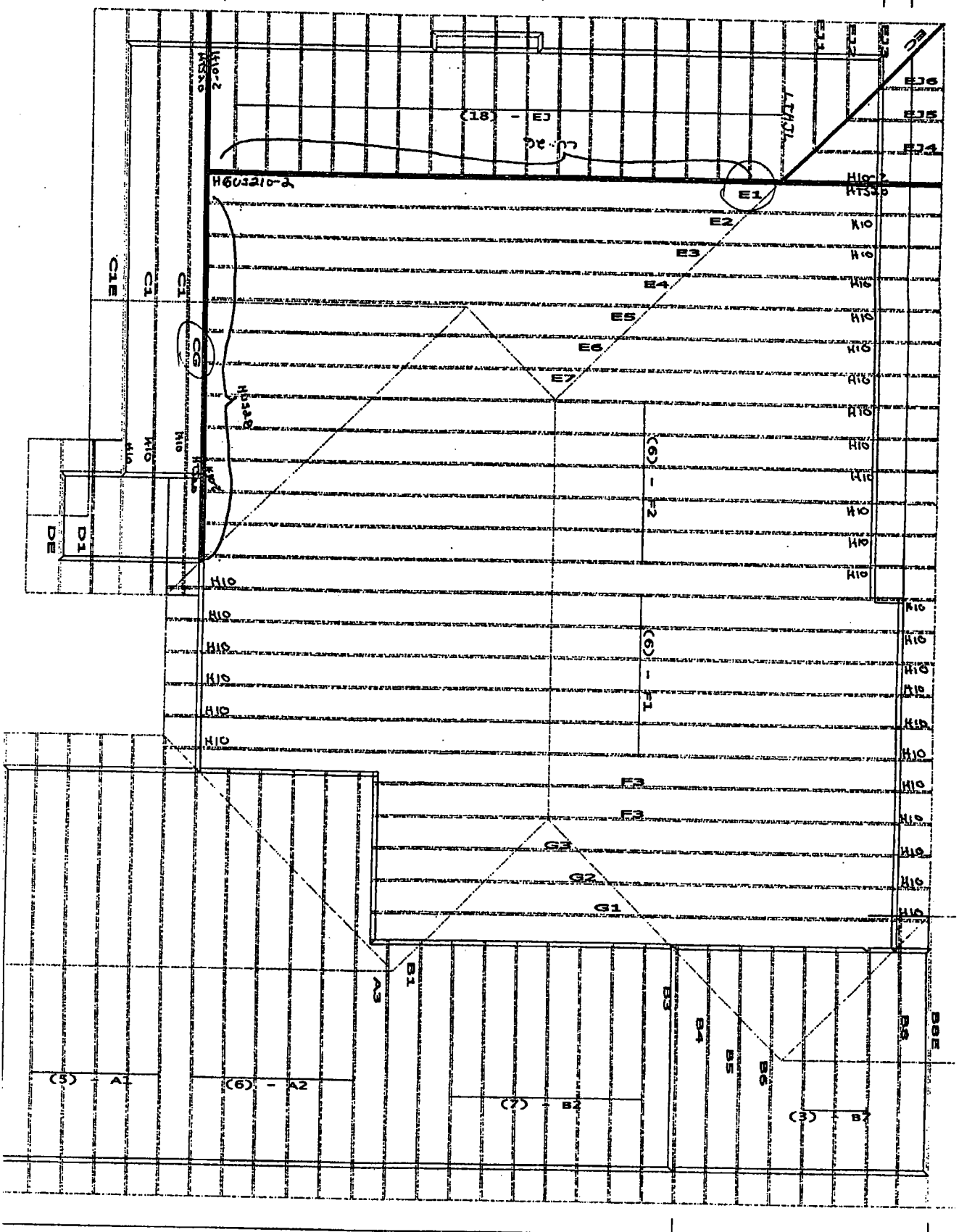
SAMPLE ONLY



10-10-0

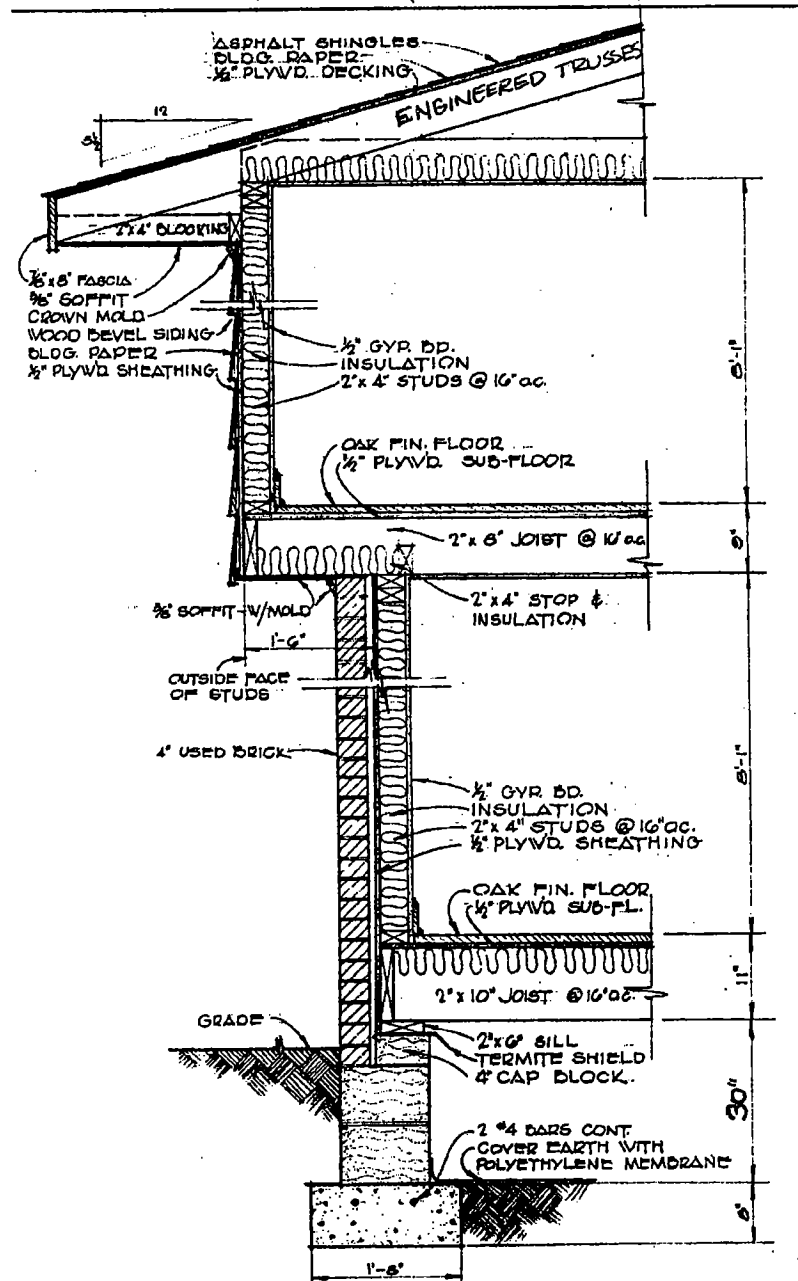
21-3-0

TYPICAL TRUSS LAYOUT



42-0-0

16-0-0



## FRONT WALL DETAIL

SCALE: 1/4" = 1'-0"

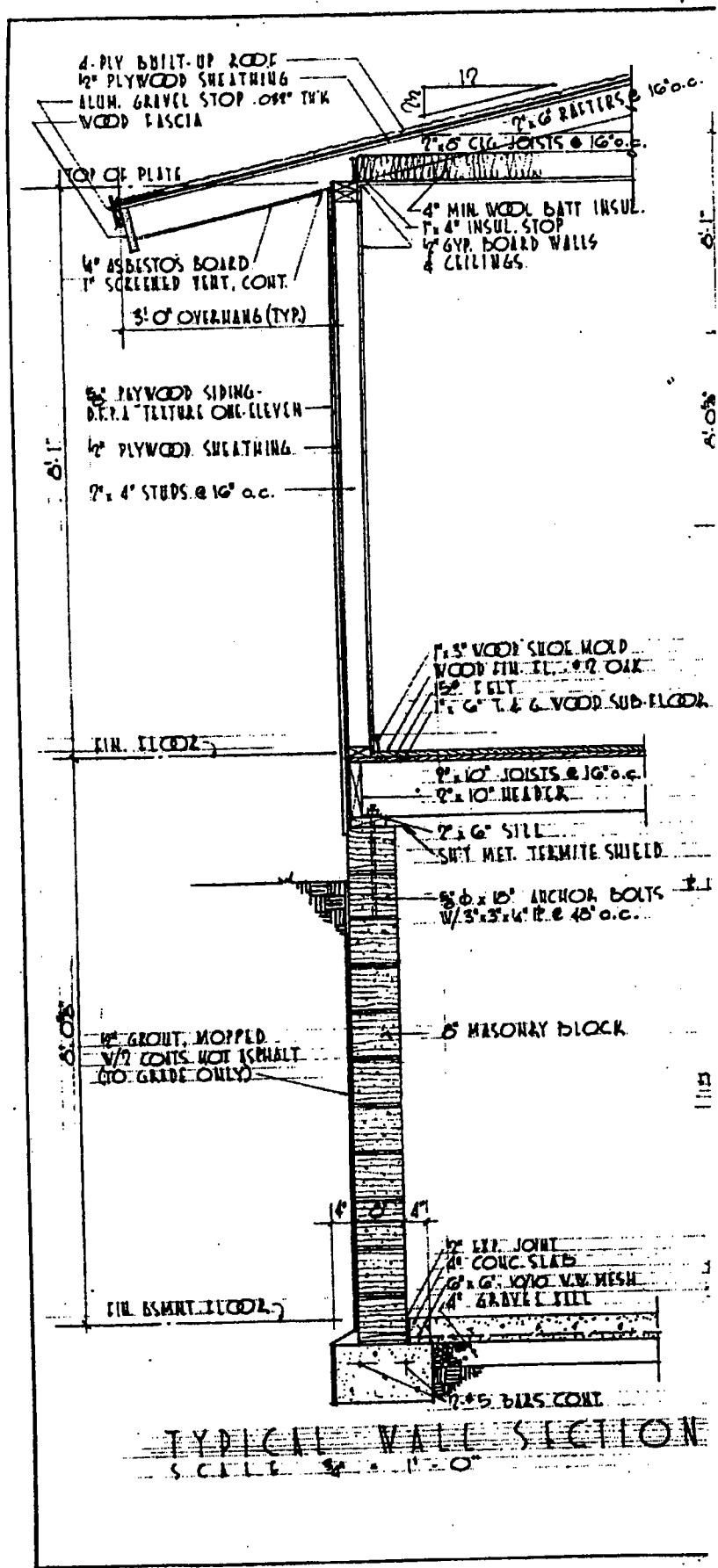
COLONIAL HOME

6

SAMPLE ONLY

N

# SAMPLE ONLY



# STAIR LAYOUTS AND DETAILS

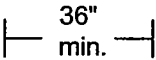
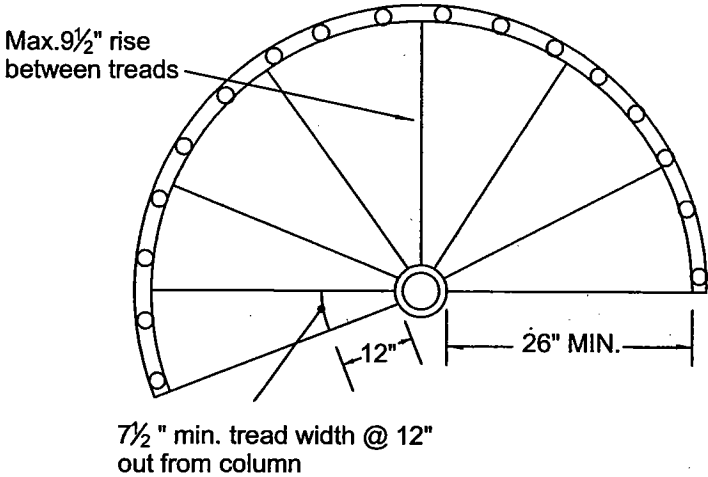


1. Ends of handrails shall be returned or shall terminate in newel posts or safety terminal
2. Maximum of 12' between landings
3. Handrails are required on one side only in residential

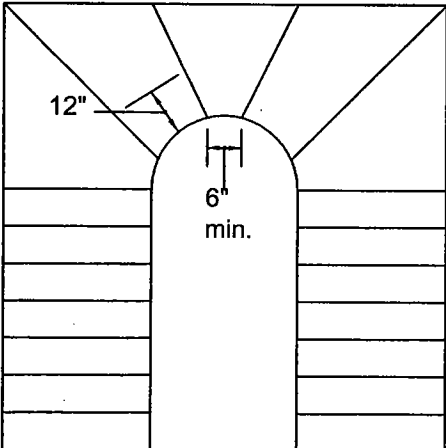
## MINIMUM HEADROOM CLEARANCE FOR STAIRS IS 6' 8" AT ANY POINT

**\*\*MINIMUM HEADROOM HEIGHT FOR SPIRAL STAIRS ONLY AT ANY POINT IS 6'6" \*\***

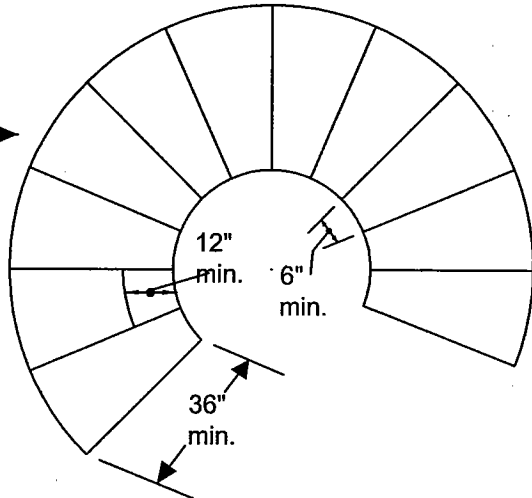
Minimum landing size is 36"X36"	
	<p>Rise: Min. 4" &amp; Max. 7<sup>3</sup>/<sub>4</sub>"</p> <p>Run: Min. 10" with <sup>3</sup>/<sub>4</sub>" to 1 <sup>1</sup>/<sub>4</sub>" nosing</p> <p><sup>3</sup>/<sub>8</sub>" max. variation in rise or run</p>



10" min. tread with <sup>3</sup>/<sub>4</sub>" nosing @ a point 12" out from inside edge



WINDING STAIRS



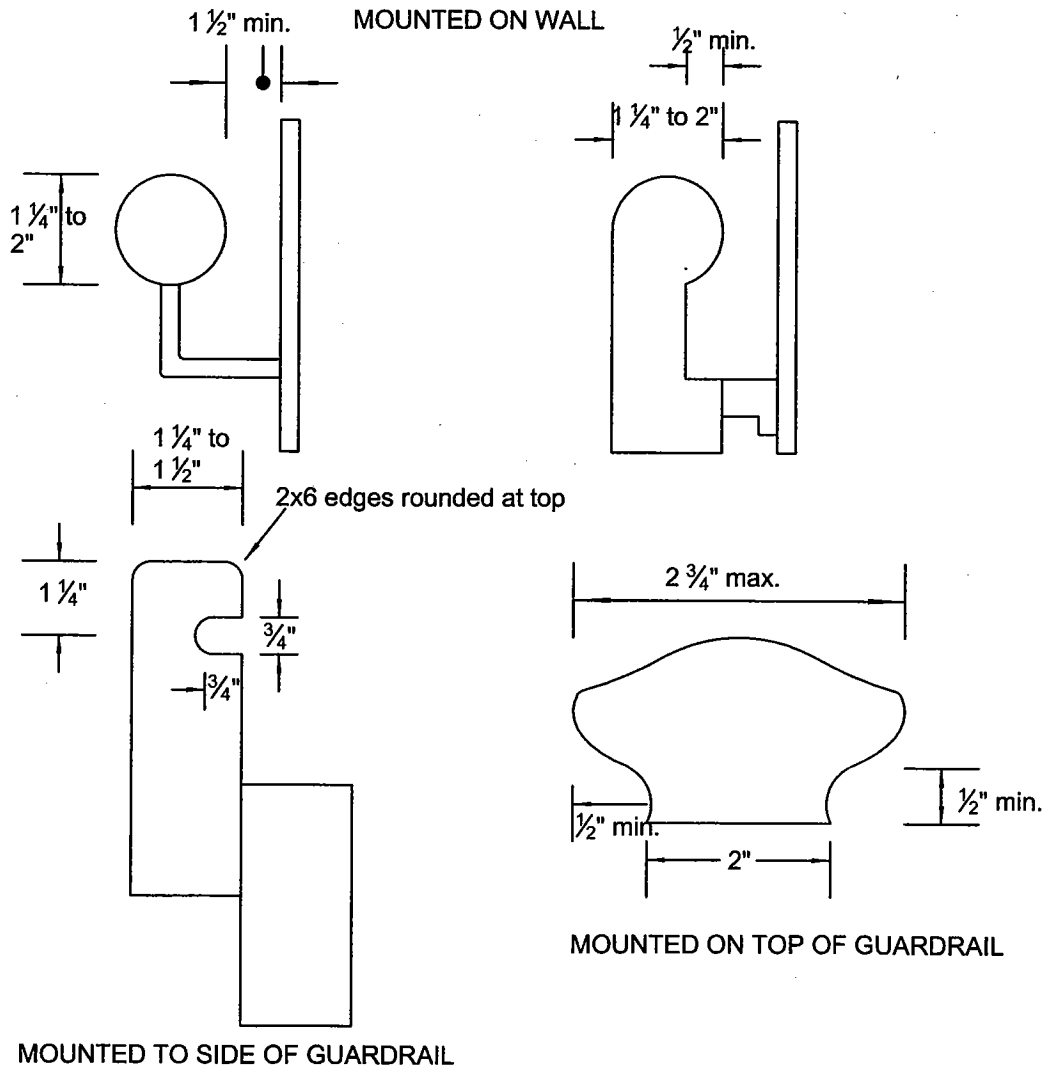
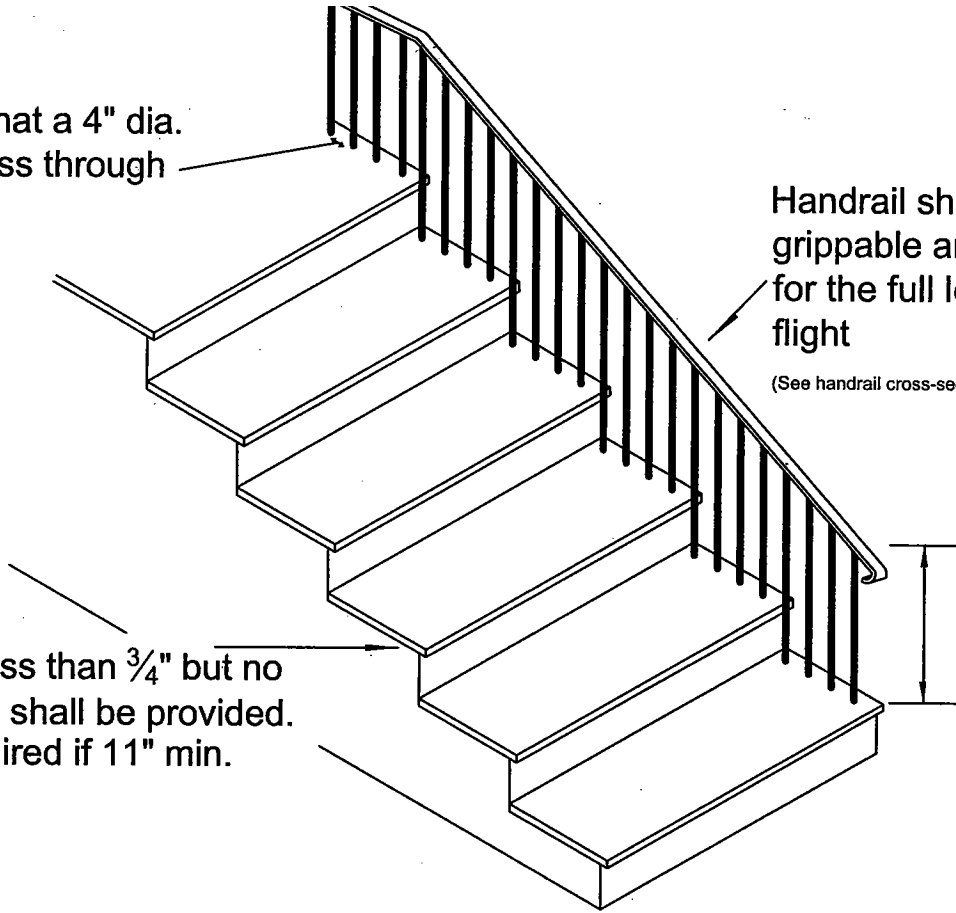
Rails spaced so that a 4" dia. sphere cannot pass through

Handrail shall be grippable and continuous for the full length of the flight

(See handrail cross-sections)

34" to 38" required on handrail height measured from finished surface ramp slope

A nosing not less than 3/4" but no more than 1 1/4" shall be provided. No nosing required if 11" min. tread depth.



MOUNTED TO SIDE OF GUARDRAIL

# Radon mitigation

P

## PASSIVE SUB-SLAB DEPRESSURIZATION RADON CONTROL SYSTEM FOR NEW CONSTRUCTION

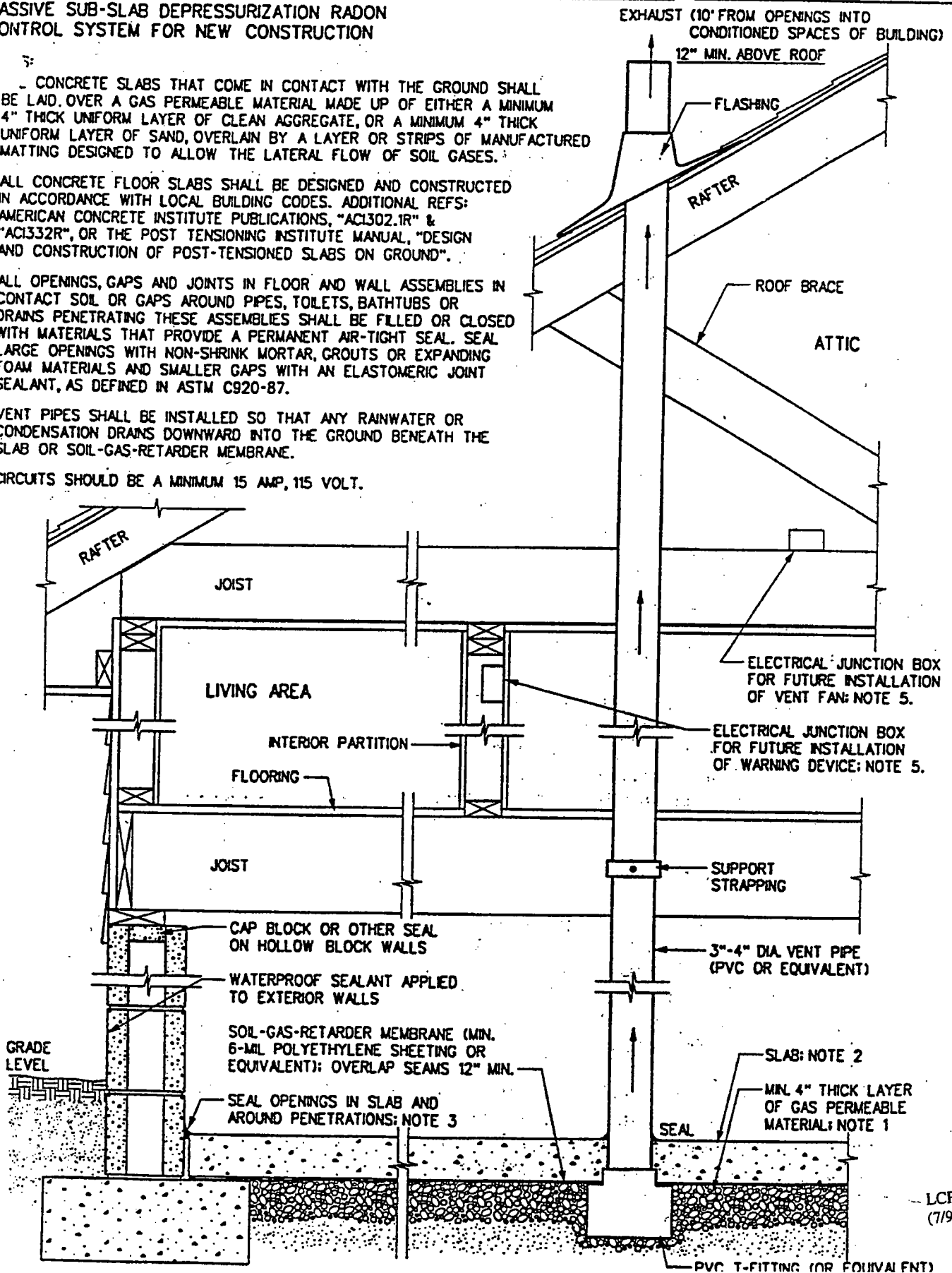
1. CONCRETE SLABS THAT COME IN CONTACT WITH THE GROUND SHALL BE LAID OVER A GAS PERMEABLE MATERIAL MADE UP OF EITHER A MINIMUM 4" THICK UNIFORM LAYER OF CLEAN AGGREGATE, OR A MINIMUM 4" THICK UNIFORM LAYER OF SAND, OVERLAIN BY A LAYER OR STRIPS OF MANUFACTURED MATTING DESIGNED TO ALLOW THE LATERAL FLOW OF SOIL GASES.

2. ALL CONCRETE FLOOR SLABS SHALL BE DESIGNED AND CONSTRUCTED IN ACCORDANCE WITH LOCAL BUILDING CODES. ADDITIONAL REFS: AMERICAN CONCRETE INSTITUTE PUBLICATIONS, "ACI302.1R" & "ACI332R", OR THE POST TENSIONING INSTITUTE MANUAL, "DESIGN AND CONSTRUCTION OF POST-TENSIONED SLABS ON GROUND".

3. ALL OPENINGS, GAPS AND JOINTS IN FLOOR AND WALL ASSEMBLIES IN CONTACT SOIL OR GAPS AROUND PIPES, TOILETS, BATHTUBS OR DRAINS PENETRATING THESE ASSEMBLIES SHALL BE FILLED OR CLOSED WITH MATERIALS THAT PROVIDE A PERMANENT AIR-TIGHT SEAL. SEAL LARGE OPENINGS WITH NON-SHRINK MORTAR, GROUTS OR EXPANDING FOAM MATERIALS AND SMALLER GAPS WITH AN ELASTOMERIC JOINT SEALANT, AS DEFINED IN ASTM C920-87.

4. VENT PIPES SHALL BE INSTALLED SO THAT ANY RAINWATER OR CONDENSATION DRAINS DOWNWARD INTO THE GROUND BENEATH THE SLAB OR SOIL-GAS-RETARDER MEMBRANE.

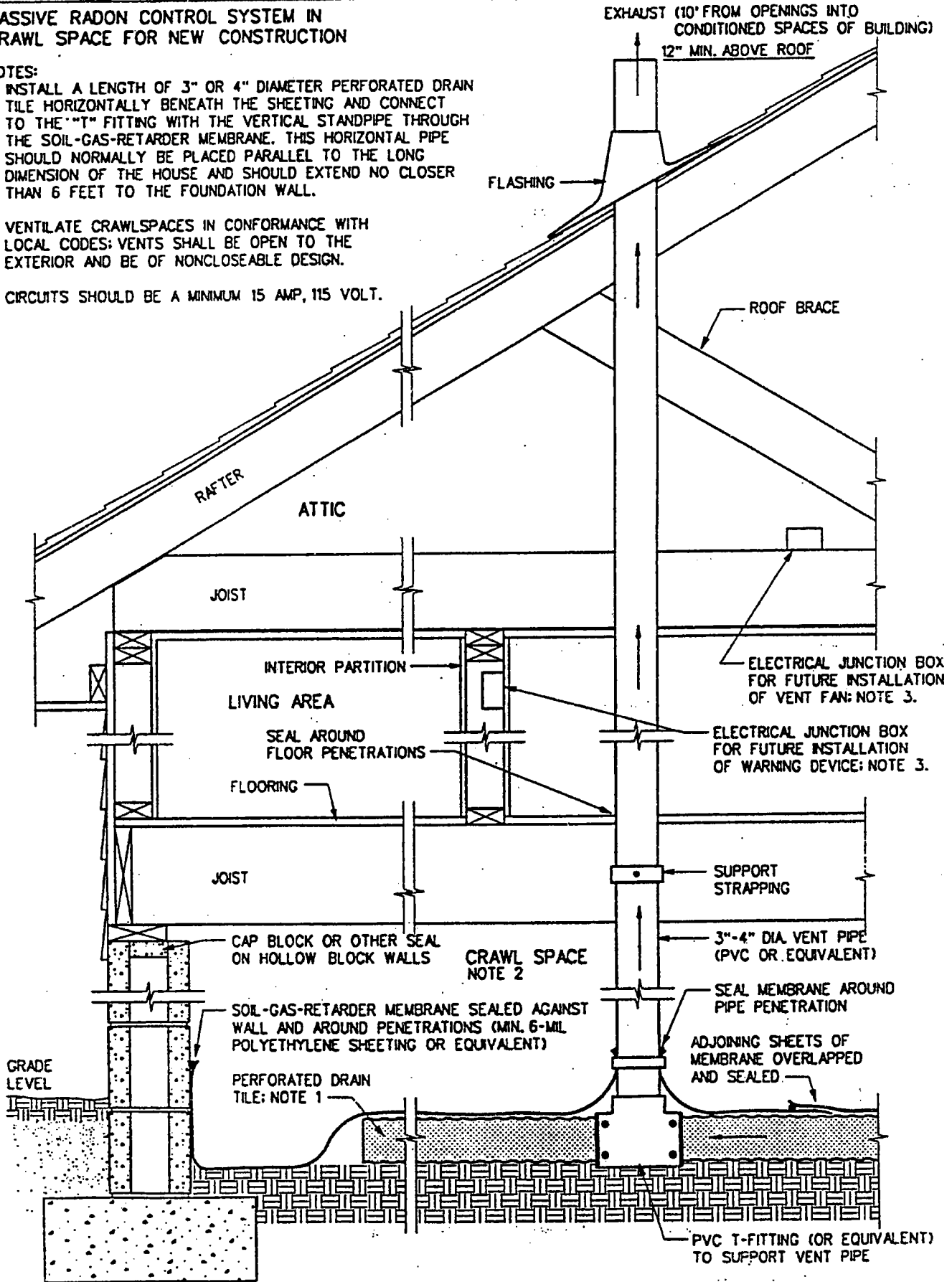
5. CIRCUITS SHOULD BE A MINIMUM 15 AMP, 115 VOLT.

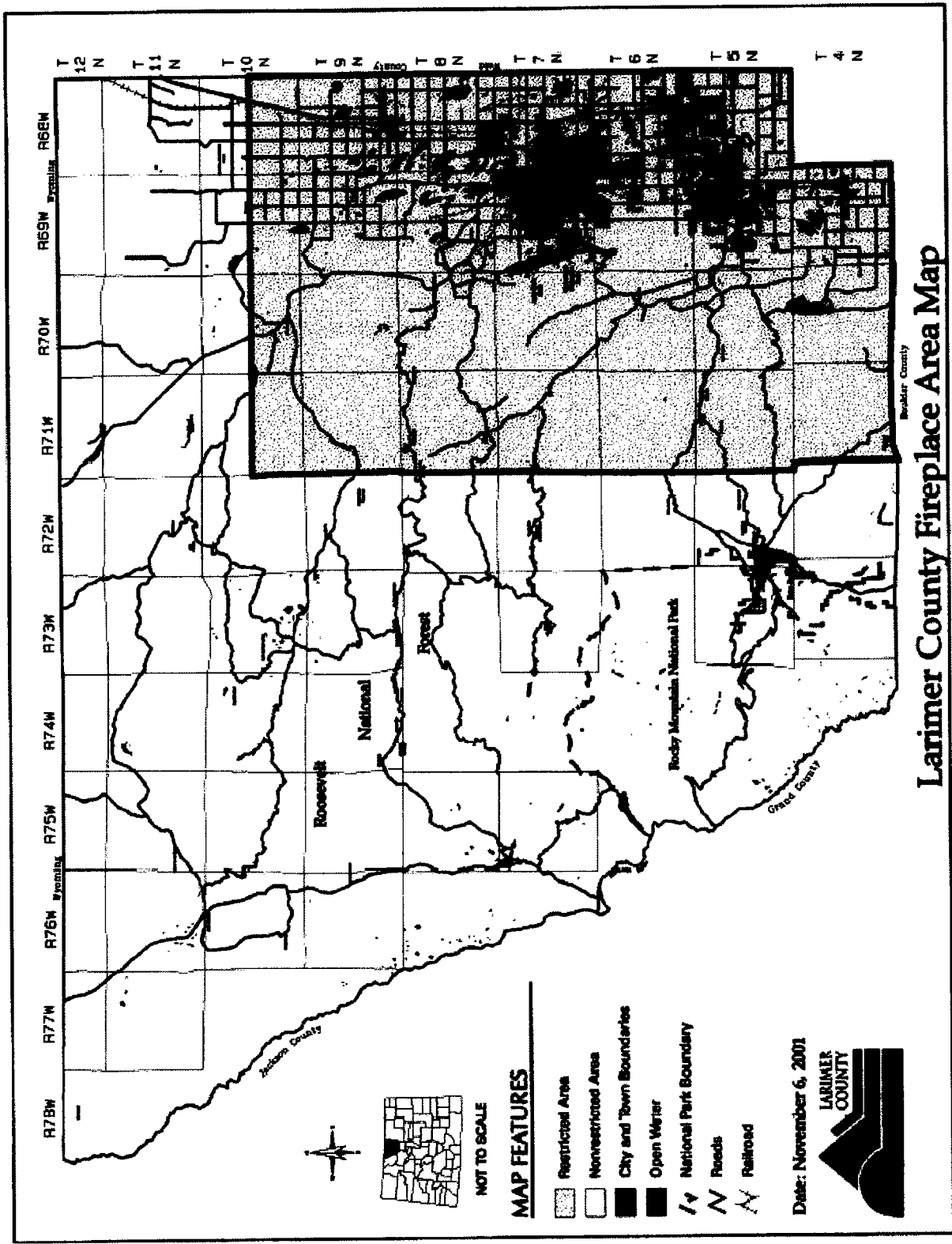


**PASSIVE RADON CONTROL SYSTEM IN CRAWL SPACE FOR NEW CONSTRUCTION**

**NOTES:**

1. INSTALL A LENGTH OF 3" OR 4" DIAMETER PERFORATED DRAIN TILE HORIZONTALLY BENEATH THE SHEETING AND CONNECT TO THE "T" FITTING WITH THE VERTICAL STANDPIPE THROUGH THE SOIL-GAS-RETARDER MEMBRANE. THIS HORIZONTAL PIPE SHOULD NORMALLY BE PLACED PARALLEL TO THE LONG DIMENSION OF THE HOUSE AND SHOULD EXTEND NO CLOSER THAN 6 FEET TO THE FOUNDATION WALL.
2. VENTILATE CRAWLSPACES IN CONFORMANCE WITH LOCAL CODES; VENTS SHALL BE OPEN TO THE EXTERIOR AND BE OF NONCLOSEABLE DESIGN.
3. CIRCUITS SHOULD BE A MINIMUM 15 AMP, 115 VOLT.





Larimer County Fireplace Area Map

MAP FEATURES

- Restricted Area
- Nonrestricted Area
- City and Town Boundaries
- Open Water
- National Park Boundary
- Roads
- Railroad

Date: November 6, 2001

